

**VILLAGE "E"**

**TENTATIVE SUBDIVISION  
MAP  
RANCHO MURIETA NORTH  
VILLAGE "D"**

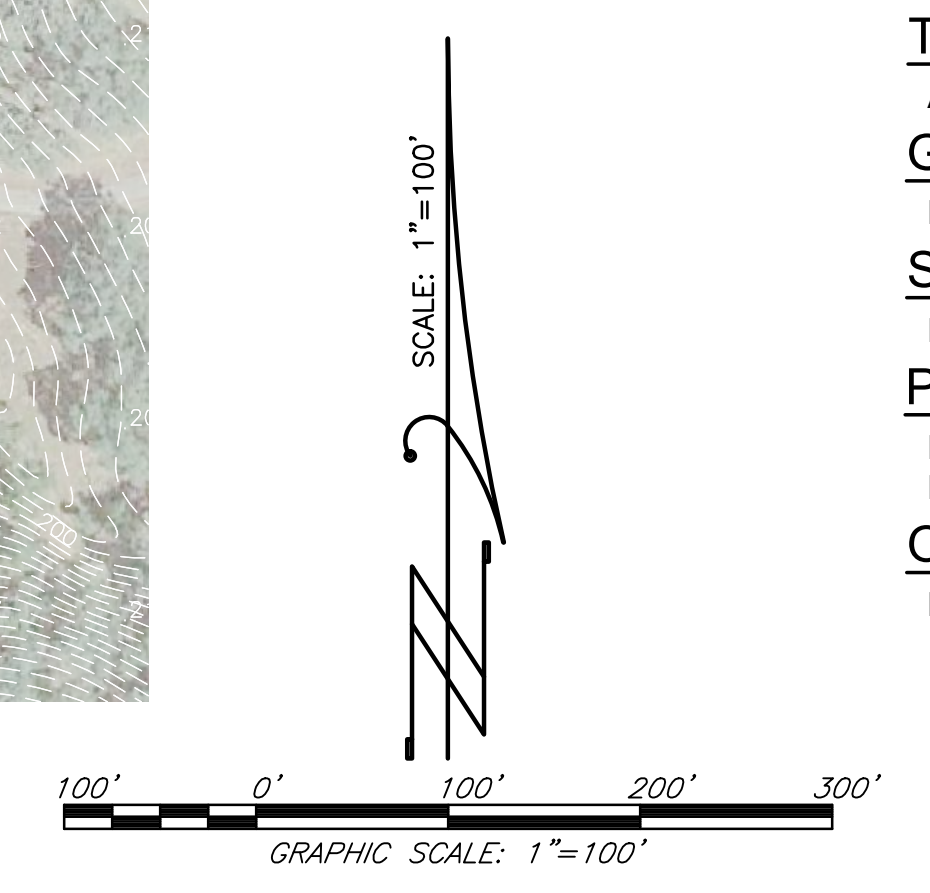
**A.P.N. PORTION of 073-0790-023**  
RANCHO MURIETA  
SACRAMENTO COUNTY, CALIFORNIA  
MARCH, 2017  
SHEET 1 of 2

**PROJECT DATA:**  
**OWNER/DEVELOPER:**  
 MURIETA LAKESIDE PROPERTIES, LLC  
 P.O. BOX 1280  
 RANCHO MURIETA, CA 95683  
 PH (916) 262-7574  
**ENGINEER:**  
 BAKER-WILLIAMS ENGINEERING GROUP  
 6020 RUTLAND DRIVE, SUITE 19  
 CARMICHAEL, CA 95608  
 PH (916) 331-4336  
**ASSESSOR'S PARCEL NUMBER:**  
 PORTION 073-0790-023

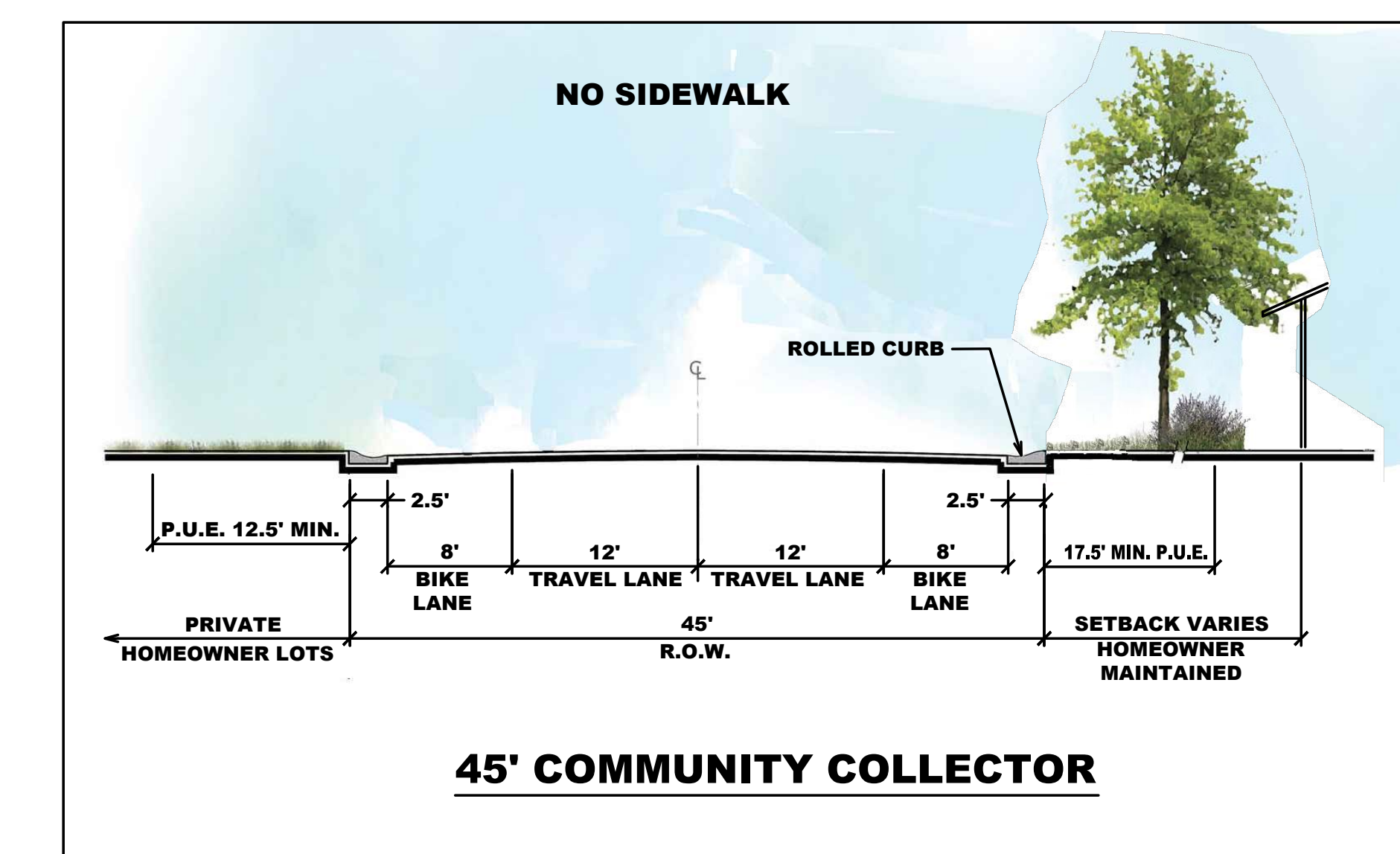
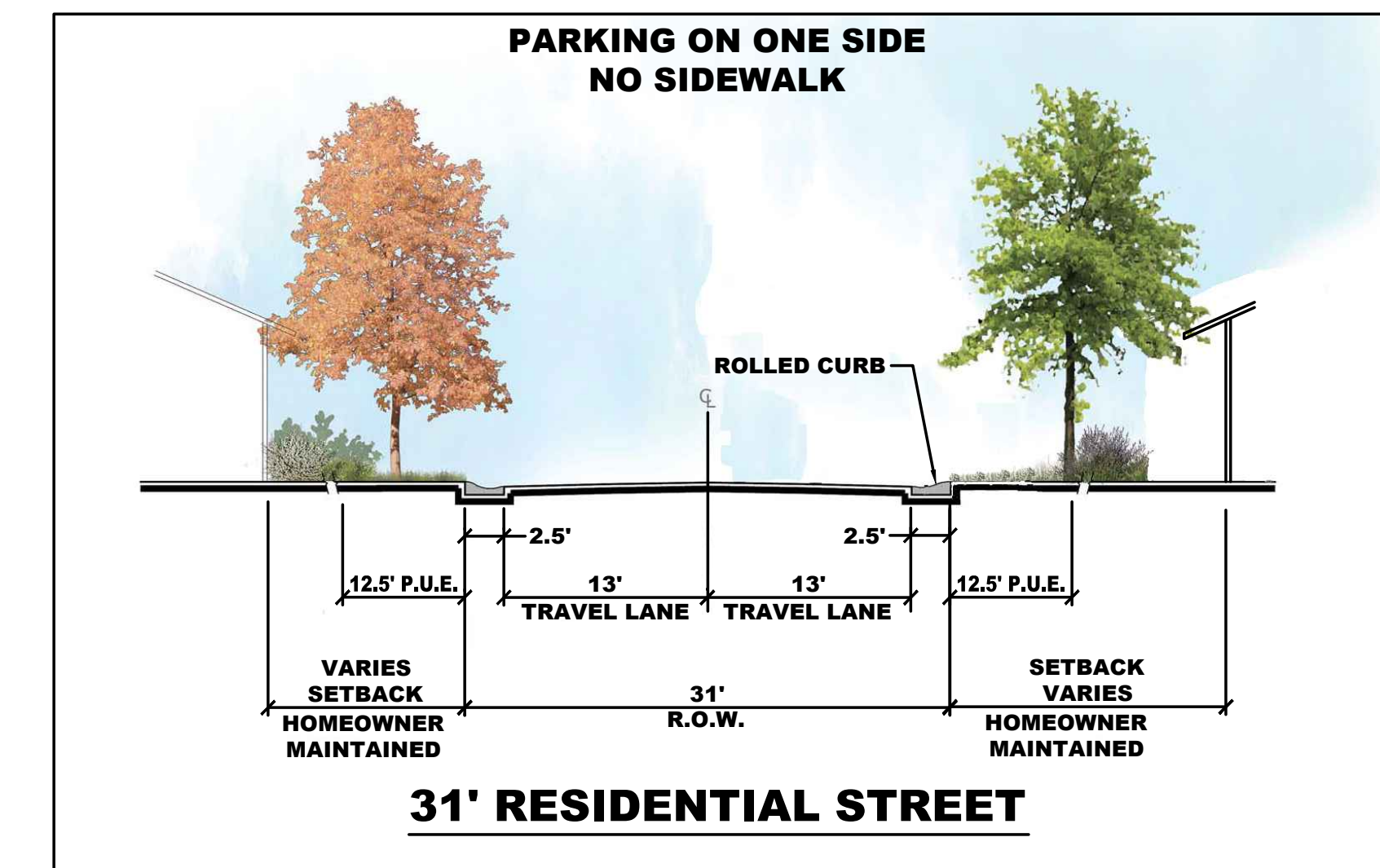
**AREA:**  
 38.35± ACRES  
**EXISTING ZONING:**  
 A-2 (PD)  
**PROPOSED ZONING:**  
 RD-4  
 PARK / RECREATION / TRAILS / OPEN SPACE  
**DENSITY:**  
 2 D.U./ACRES  
**EXISTING USE:**  
 VACANT / EXISTING ROADS  
**PROPOSED USE:**  
 RESIDENTIAL DEVELOPMENT  
 28 Single Family Lots  
 3 Openspace-Park Parcels  
 1 Utility Parcel (Lot B)  
 1 Street Lot (Lot Z)

- NOTES:**
- SUBDIVISION MAY BE CONSTRUCTED IN PHASES.
  - SUBDIVIDER RESERVES THE RIGHT TO FILE MULTIPLE FINAL MAPS.
  - PHOTOGRAPHIC SCALING IS ONLY APPROXIMATE AND IS SUBJECT TO ADJUSTMENT.
  - CONTOUR INTERVAL IS 2'.
  - STREETS ARE PRIVATELY MAINTAINED BY HOME OWNERS ASSOCIATION.

**SANITARY SEWER:**  
 RANCHO MURIETA COMMUNITY SERVICES DISTRICT  
**STORM DRAIN:**  
 RANCHO MURIETA COMMUNITY SERVICES DISTRICT  
**WATER SUPPLY:**  
 RANCHO MURIETA COMMUNITY SERVICES DISTRICT  
**FIRE PROTECTION:**  
 SACRAMENTO METRO FIRE DISTRICT  
**ELECTRICAL SERVICE:**  
 S.M.U.D.  
**TELEPHONE SERVICE:**  
 A.T. and T.  
**GAS SUPPLY:**  
 PROPANE (NATURAL GAS NOT AVAILABLE)  
**SCHOOL DISTRICT:**  
 ELK GROVE UNIFIED  
**PARK DISTRICT:**  
 RANCHO MURIETA ASSOCIATION  
 RANCHO NORTH ASSOCIATION  
**OFF-STREET-PARKING:**  
 NO STALLS



11080336-TEXT-MAP-VILLAGE-D



TENTATIVE SUBDIVISION  
MAP  
RANCHO MURIETA NORTH  
VILLAGE "D"  
A.P.N. PORTION of 073-0790-023  
RANCHO MURIETA  
SACRAMENTO COUNTY, CALIFORNIA  
MARCH, 2017  
SHEET 2 of 2