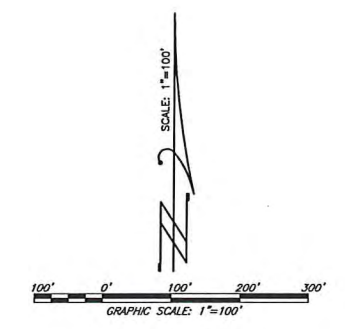


REVISED
TENTATIVE SUBDIVISION
MAP
RANCHO MURIETA NORTH
VILLAGE "A"
A.P.N. 073-0800-008
RANCHO MURIETA
SACRAMENTO COUNTY, CALIFORNIA
NOVEMBER, 2016

214 LOTS

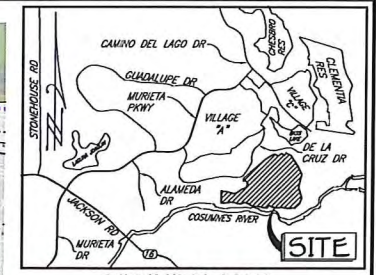
DEVELOPMENT SUMMARY

| | |
|--------------------------|----------|
| VILLAGE 'A' | |
| 90' x 150' (Lots 1-21) - | 21 Lots |
| 75' x 85' (Lots 22-70) - | 49 Lots |
| Cluster 'A' (29) - | 116 Lots |
| Cluster 'E' (7) - | 28 Lots |
| Village Total - | 214 Lots |



VILLAGE "A"

VILLAGE "C"



VICINITY MAP
NO SCALE

**REVISED
TENTATIVE SUBDIVISION
MAP
RANCHO MURIETA NORTH
VILLAGE "B"**
A.P.N. 073-0790-023
RANCHO MURIETA
SACRAMENTO COUNTY, CALIFORNIA
AUGUST, 2016

150 LOTS

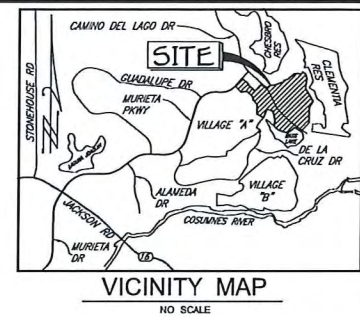
**PRELIMINARY
SUBJECT TO CHANGE**

100 YEAR FLOOD PLAIN

EX. 15' WATER MAIN ESMT. PER 871216 OR 23 & P.U.E. PER 20040924 OR 1215



GRAPHIC SCALE: 1"=100'

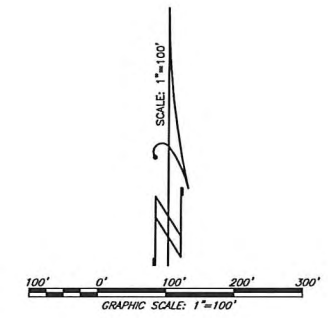


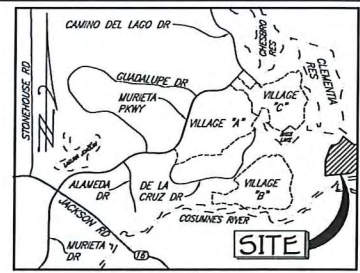
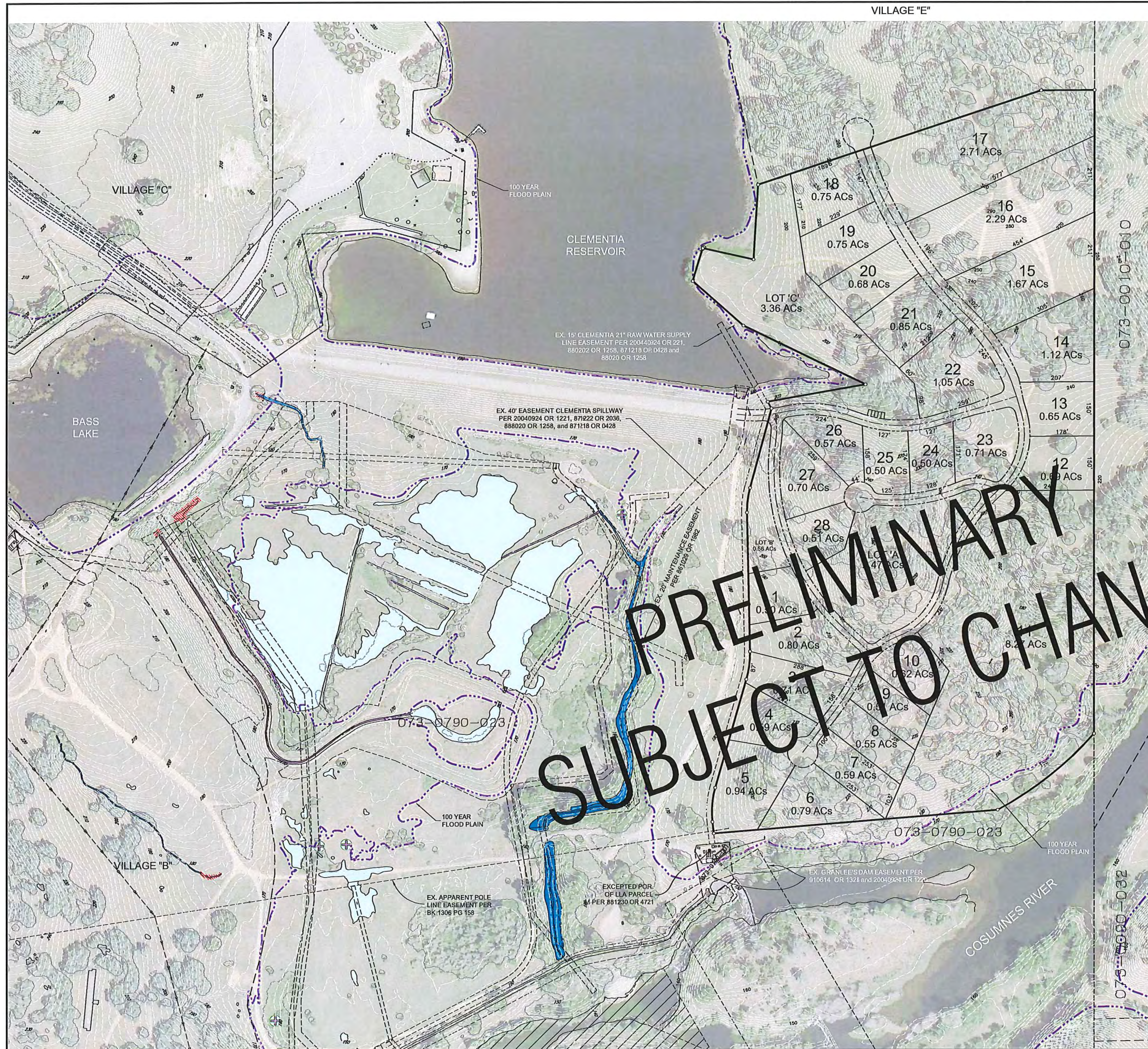
REVISED
TENTATIVE SUBDIVISION
MAP
RANCHO MURIETA NORTH
VILLAGE "C"
 A.P.N. 073-0800-009
 RANCHO MURIETA
 SACRAMENTO COUNTY, CALIFORNIA
 NOVEMBER, 2016

118 LOTS

DEVELOPMENT SUMMARY

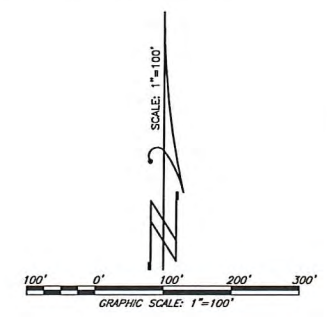
| | |
|--------------------|----------|
| Village 'C' | |
| 95' x 120' - | 22 Lots |
| Cluster 'A'(13) - | 52 Lots |
| Cluster 'E' (13) - | 44 Lots |
| Village Total | 118 Lots |

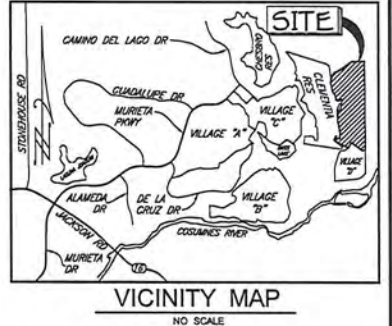
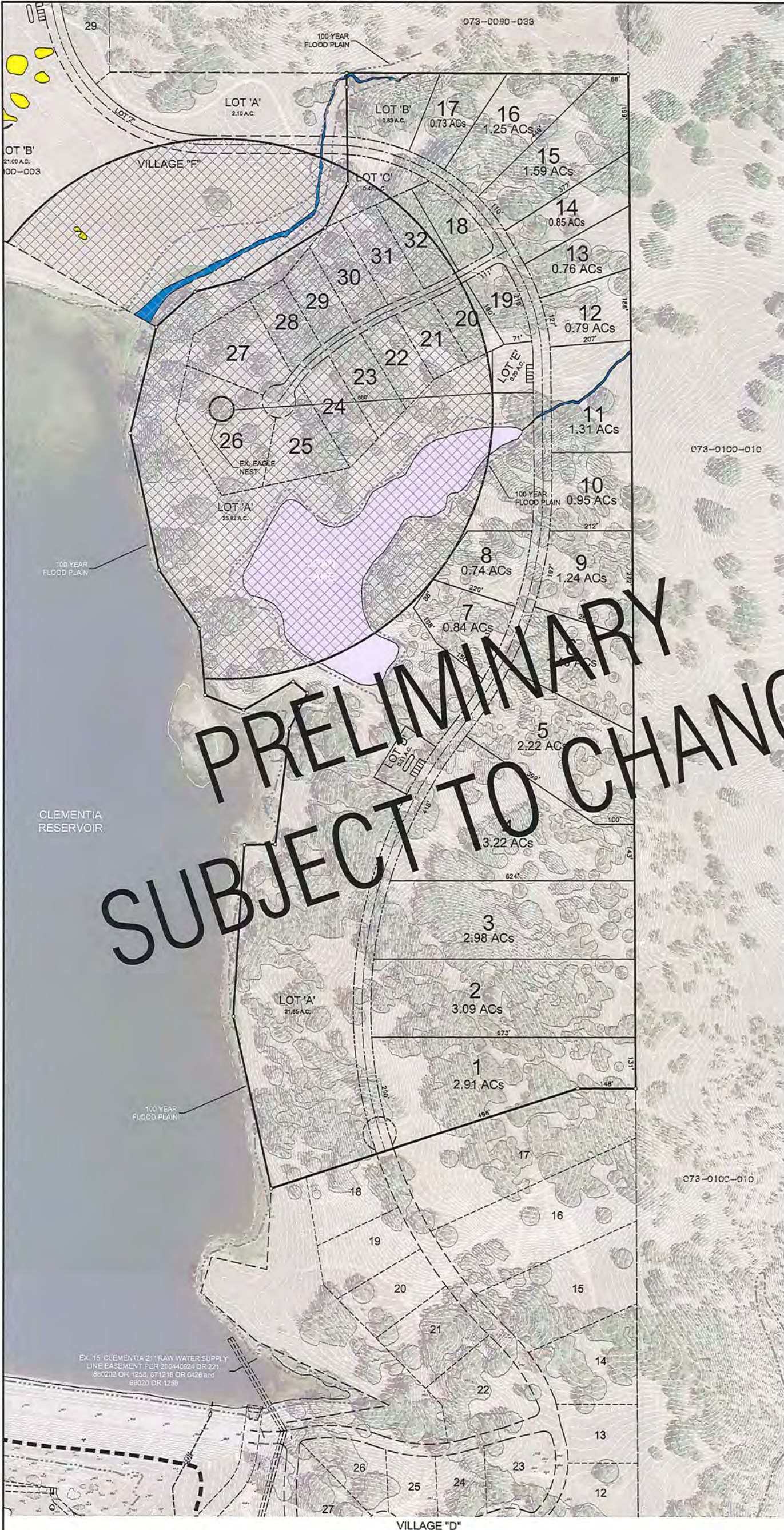




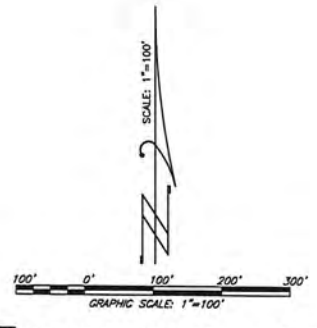
REVISED
 TENTATIVE SUBDIVISION
 MAP
 RANCHO MURIETA NORTH
 VILLAGE "D"
 A.P.N. PORTION of 073-0790-023
 RANCHO MURIETA
 SACRAMENTO COUNTY, CALIFORNIA
 NOVEMBER, 2016

28 LOTS

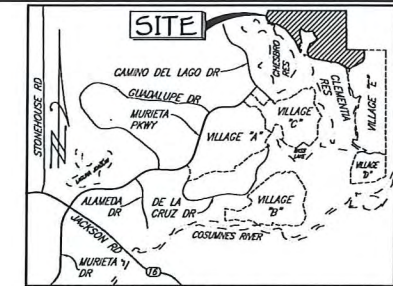




REVISED
 TENTATIVE SUBDIVISION
 MAP
 RANCHO MURIETA NORTH
 VILLAGE "E"
 A.P.N. PORTION 073-0800-003
 RANCHO MURIETA
 SACRAMENTO COUNTY, CALIFORNIA
 AUGUST, 2016
 32 LOTS

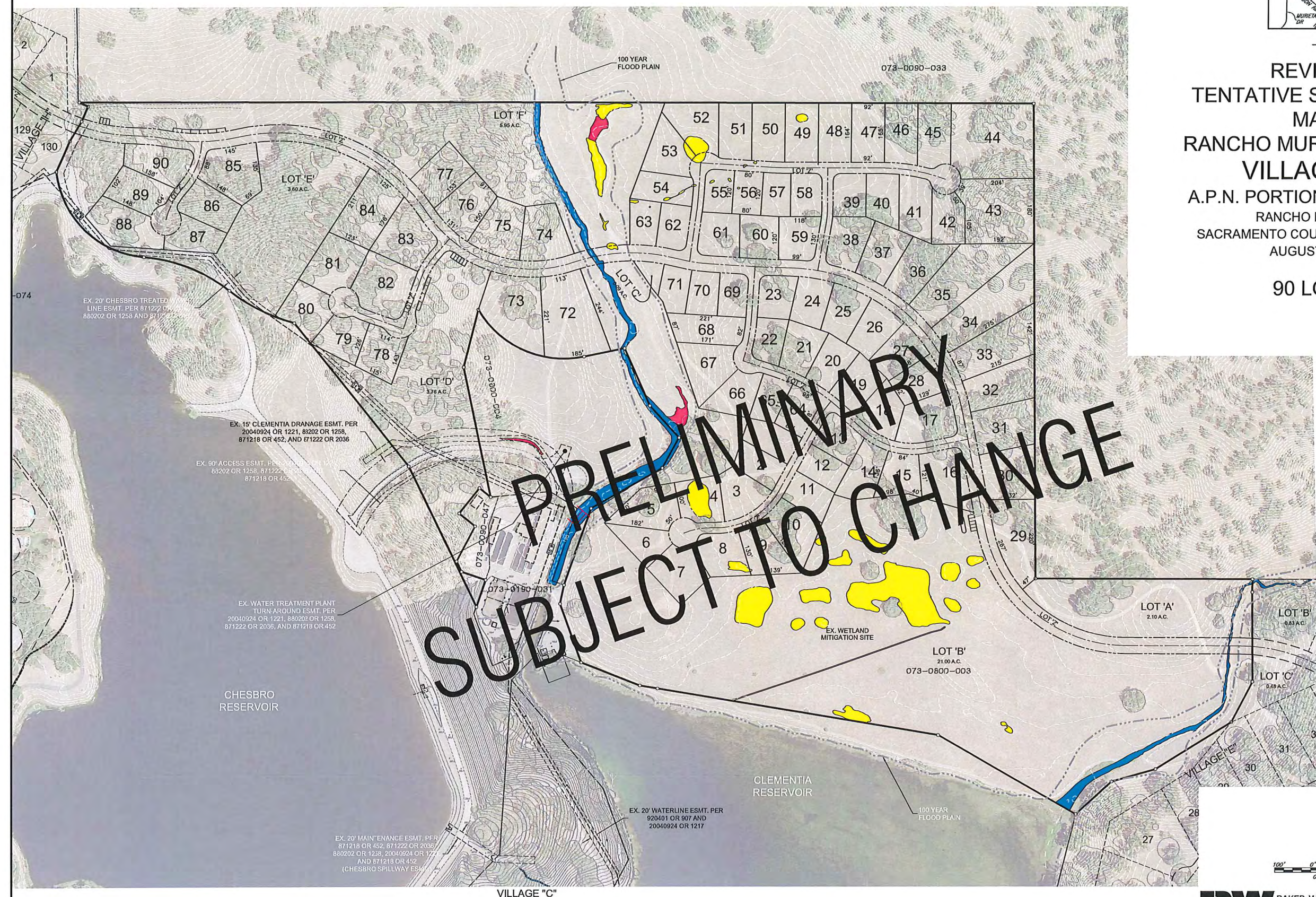


IBW BAKER-WILLIAMS ENGINEERING GROUP
 Engineering / Surveying / Land Planning / Entitlement Processing / GPS Services
 6020 Rutland Drive, Suite 19 - Carmichael CA 95608
 (916) 331-4336 - fax (916) 331-4430 - office@bweengineers.com - www.bweengineers.com



VICINITY MAP
NO SCALE

REVISED
TENTATIVE SUBDIVISION
MAP
RANCHO MURIETA NORTH
VILLAGE "F"
A.P.N. PORTION 073-0800-003
RANCHO MURIETA
SACRAMENTO COUNTY, CALIFORNIA
AUGUST, 2016
90 LOTS



EX. 20' CHESBRO TREATED WATER LINE ESMT. PER 871222 OR 880202 OR 1258 AND 871218 OR 1259

EX. 15' CLEMENTIA DRAINAGE ESMT. PER 20040924 OR 1221, 880202 OR 1258, 871218 OR 452, AND 871222 OR 2036

EX. 90' ACCESS ESMT. PER 880202 OR 1258, 871222 OR 2036, 871218 OR 452, AND 871222 OR 2036

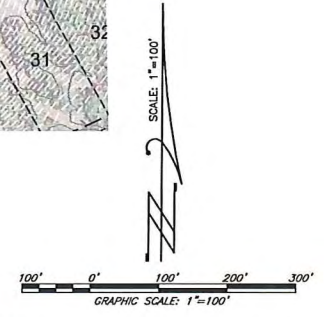
EX. WATER TREATMENT PLANT TURN-AROUND ESMT. PER 20040924 OR 1221, 880202 OR 1258, 871222 OR 2036, AND 871218 OR 452

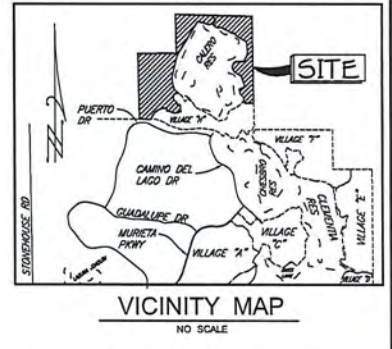
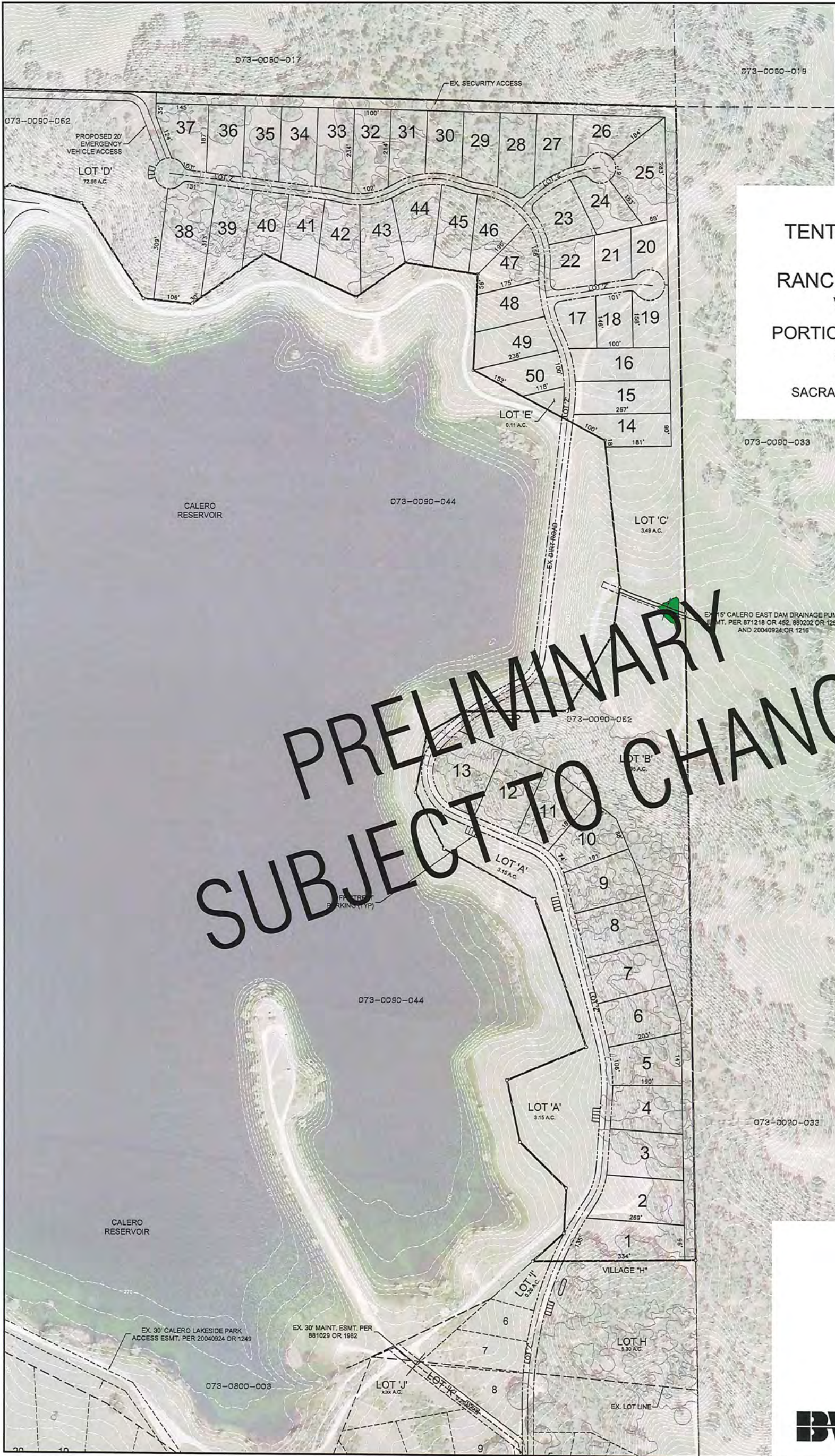
CHESBRO RESERVOIR

EX. 20' MAINTENANCE ESMT. PER 871218 OR 452, 871222 OR 2036, 880202 OR 1258, 20040924 OR 1221, AND 871218 OR 452 (CHESBRO SPILLWAY ESMT.)

EX. 20' WATERLINE ESMT. PER 920401 OR 907 AND 20040924 OR 1217

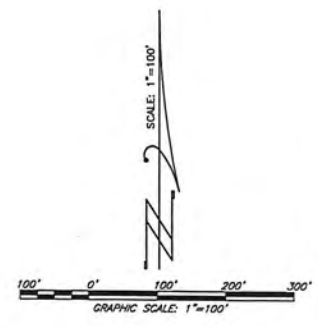
LOT 'B'
21.00 A.C.
073-0800-003



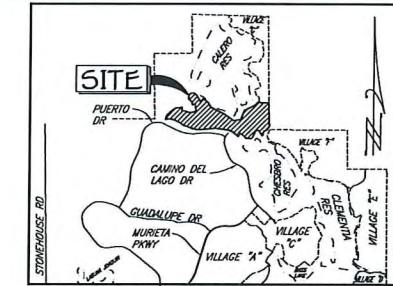


REVISED
 TENTATIVE SUBDIVISION
 MAP
 RANCHO MURIETA NORTH
 VILLAGE "G"
 PORTION of A.P.N. 073-0090-062
 and 073-0800-008
 RANCHO MURIETA
 SACRAMENTO COUNTY, CALIFORNIA
 AUGUST, 2016
 50 LOTS

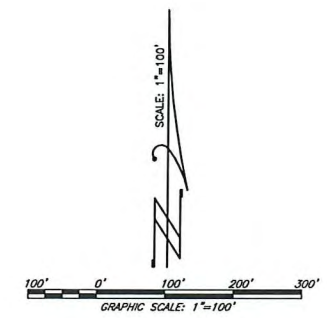
**PRELIMINARY
 SUBJECT TO CHANGE**



IBW BAKER-WILLIAMS ENGINEERING GROUP
 Engineering / Surveying / Land Planning / Entitlement Processing / GPS Services
 6020 Rutland Drive, Suite 19 - Carmichael, CA 95608
 (916) 331-4336 - fax (916) 331-4430 - office@bwengineers.com - www.bwengineers.com



VICINITY MAP
NO SCALE



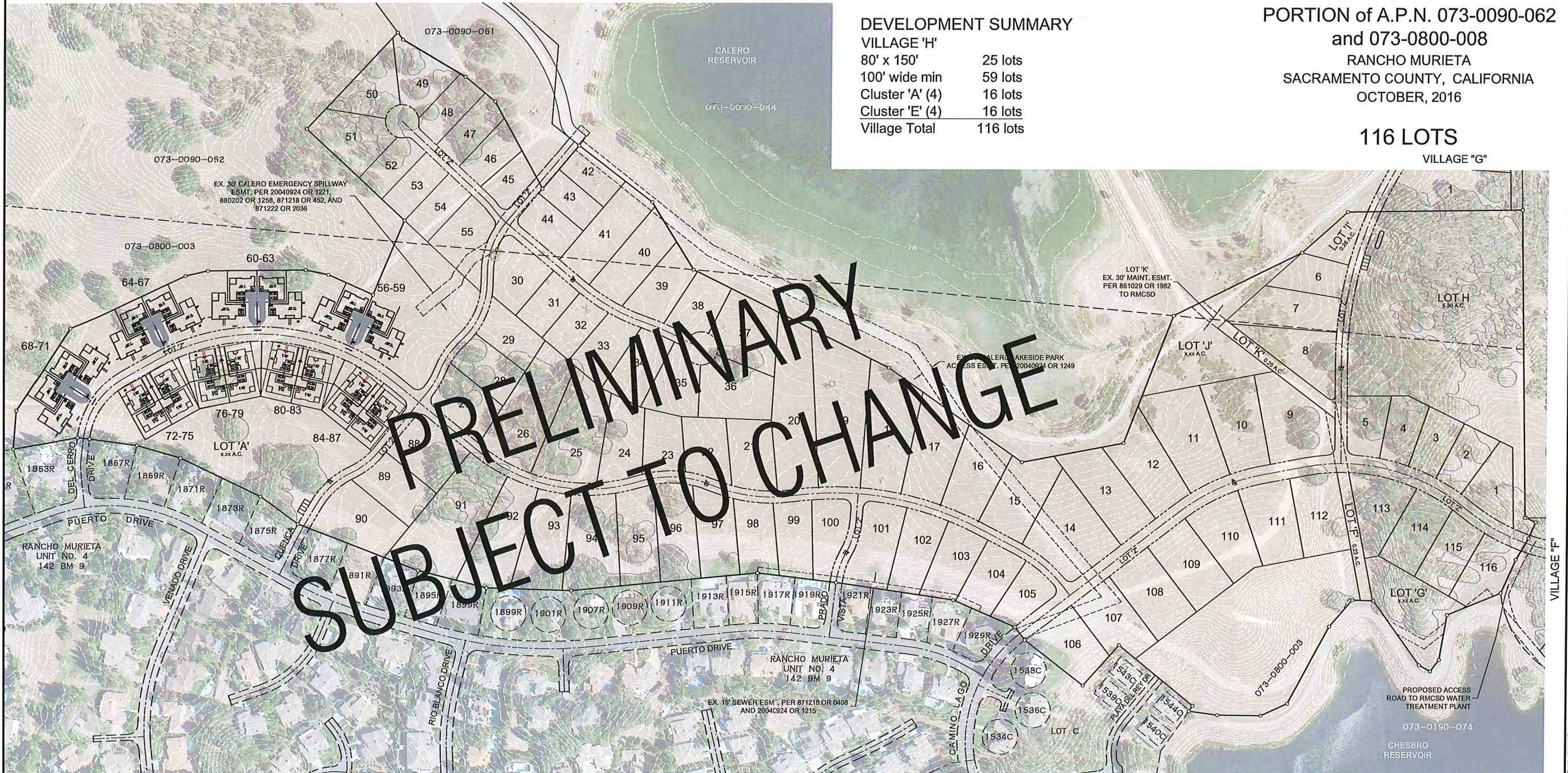
REVISED
TENTATIVE SUBDIVISION
MAP
VILLAGE "H"
PORTION of A.P.N. 073-0090-062
and 073-0800-008
RANCHO MURIETA
SACRAMENTO COUNTY, CALIFORNIA
OCTOBER, 2016

116 LOTS
VILLAGE "G"

DEVELOPMENT SUMMARY

| | |
|-----------------|----------|
| VILLAGE 'H' | |
| 80' x 150' | 25 lots |
| 100' wide min | 59 lots |
| Cluster 'A' (4) | 16 lots |
| Cluster 'E' (4) | 16 lots |
| Village Total | 116 lots |

VILLAGE "G"



**PRELIMINARY
SUBJECT TO CHANGE**

1108036-STUDY-PLAN-VILLAGE-H