

Re-Envision

WEST ARDEN ARCADE

Design Workshop Opening Presentation

October 5th – October 8th, 2020

Agenda

Project Overview & Update	20 min
Small Group Activity #1 Introduction	8 min
Small Group Discussion #1	35 min
Small Group Activity #2 Introduction	10 min
Small Group Discussion #2	35 min
Final Q&A	15 min

Virtual Housekeeping!

Find the Chat and Participants Windows

Click on the following icons in your menu bar. Additional windows will appear with a list of Participants and Chat.



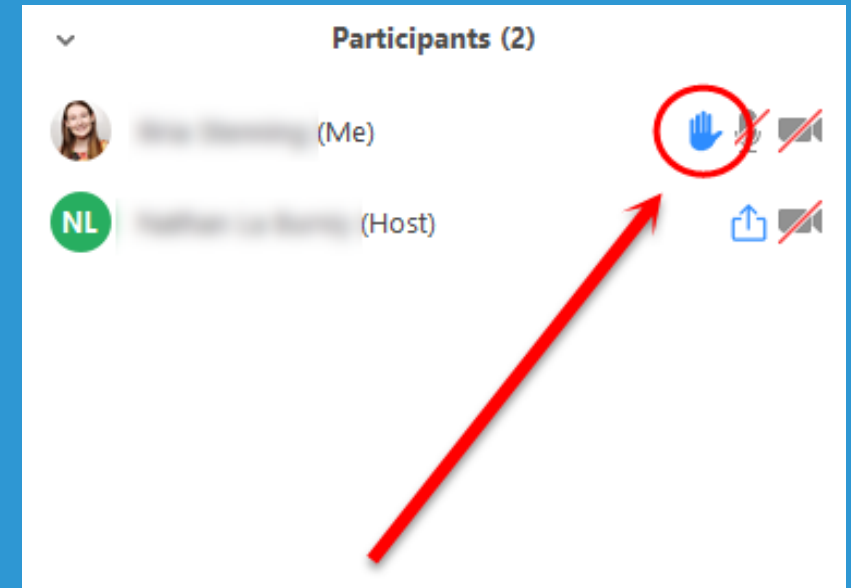
- See names of other participants
- This is where you can “Raise Your Hand”

- Chat with Everyone on the call, or just the Host

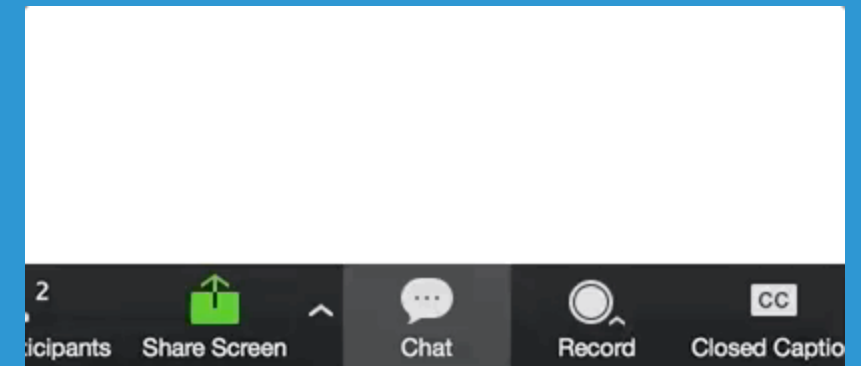
Muted Upon Entry

Everyone is muted upon entry.

- ✓ Please use the Chat feature or Raise Your Hand if you have a question. When called on, lower your hand and unmute yourself!
- ✓ (On a phone, press 9 to raise your hand and 6 to unmute when prompted)

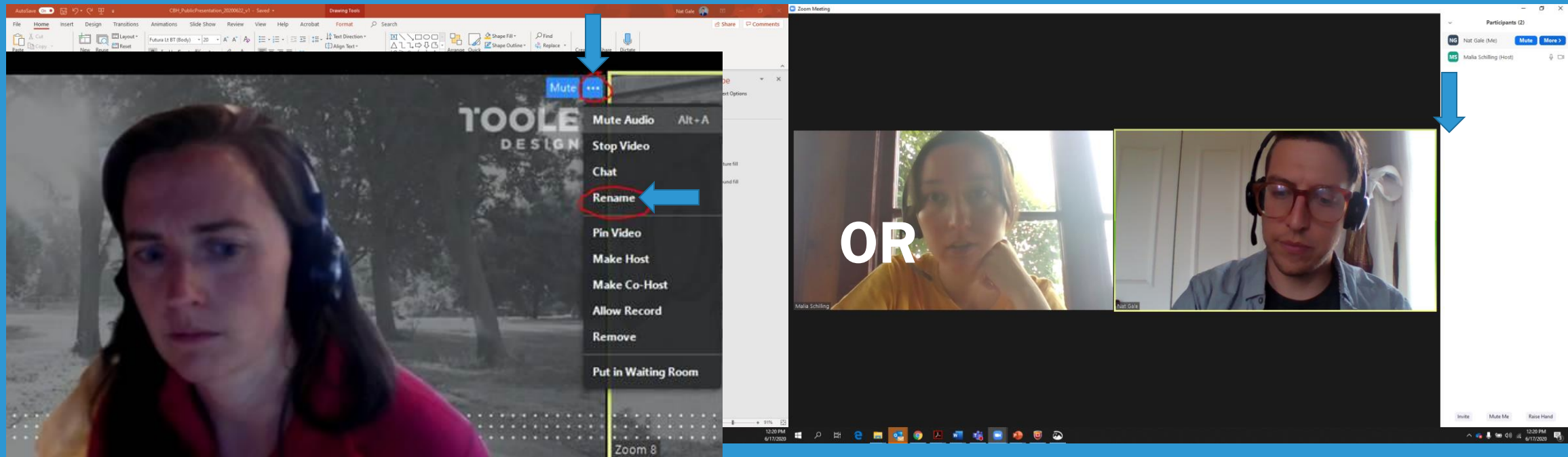


What you'll see when your hand is raised



Click the speech bubble to open the chat

Please Rename Yourself, if needed



Click on the additional options in your video

Click “more” and then
“rename” in the participants
window

Please Link your Audio

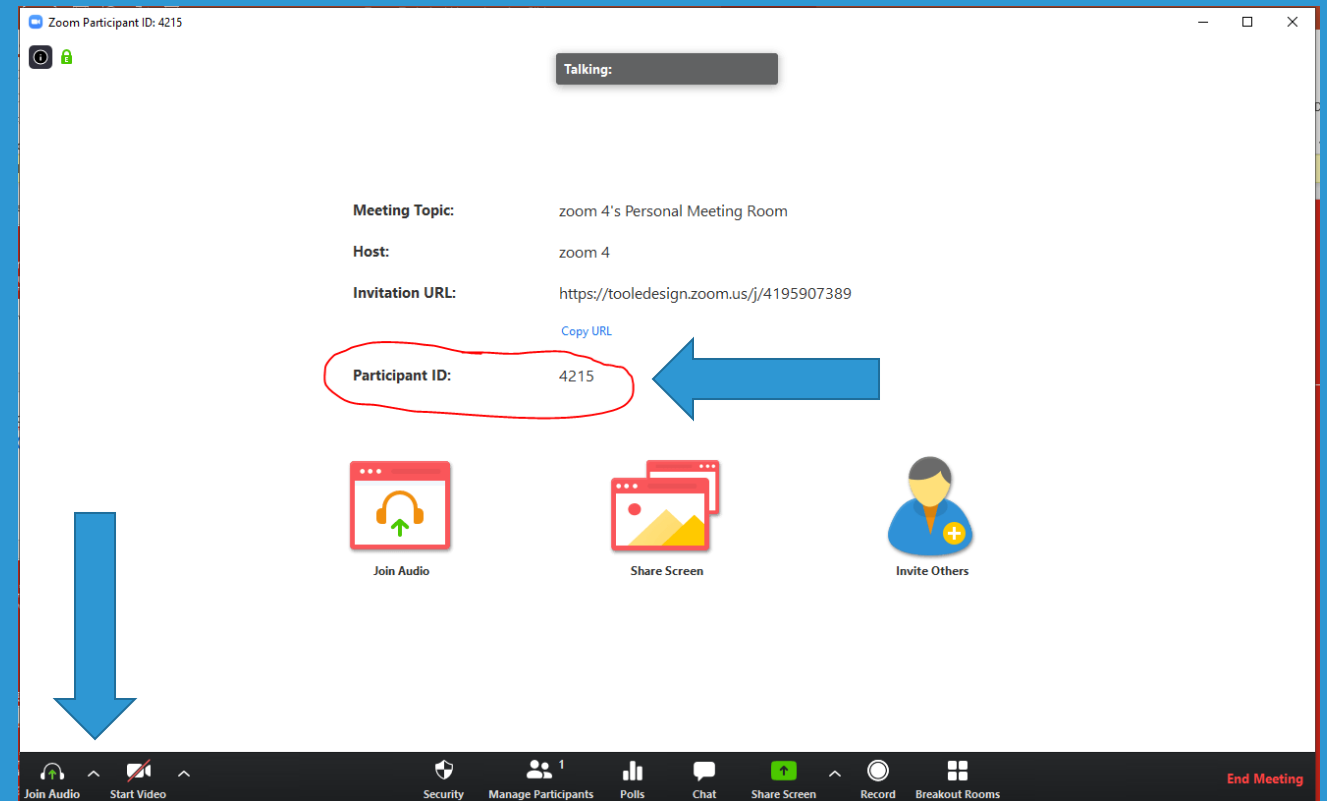
If you're listening in by phone, please link your phone to your computer.

Find your Participant ID on your home screen. If screenshare has started, you can find this in the audio settings.

Once you have your Participant ID, press #Participant ID#

In this example, you'd press:

4 2 1 5





This call is being recorded!

Re-Envision

WEST ARDEN ARCADE



SACRAMENTO
COUNTY

TOOLE
DESIGN

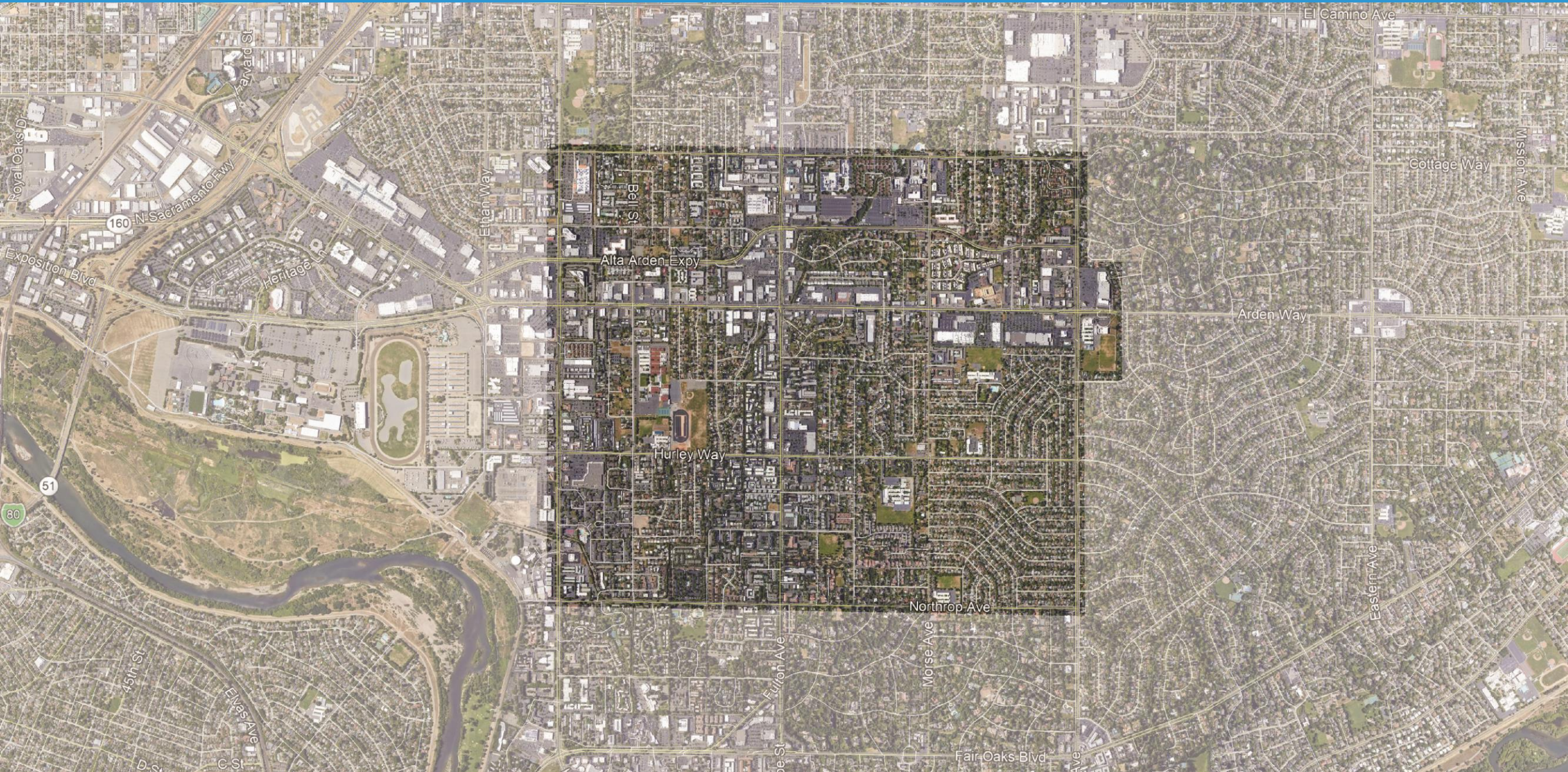


Project Overview

The Re-Envision West Arden Arcade Project is a 16-month planning process funded through the Caltrans Sustainable Communities Grant Program. The goal is to develop an actionable plan that...

- Provides **comfortable and connected** facilities for all users
- Balances **multimodal** operations through innovative design
- Promotes a culture of **safety** for all modes of transportation
- Increases **economic opportunities** for local businesses
- Address **sustainability and equity** through providing transportation options

Project Study Area



Project Schedule

Spring 2020

Summer 2020

Fall/Winter 2020

Winter/Spring 2021

Project launch

Research and analysis

Discovery Charrette
August 2020

On-going
community
engagement

On-going design
discovery

Design Charrette
October 5-8, 2020

On-going
community
engagement

Design refinements

Draft plan

Review and
adopt final plan

We
are
here

Design Workshop Schedule – Public Sessions

Monday
Oct 5th

5:00 - 7:00 PM

Opening
Presentation
& Discussion

We
are
here

Tuesday,
Wednesday,
Thursday

*Planning and design
work*

Thursday
Oct 8th

5:00 – 7:00 PM

Closing
Presentation
& Discussion

project website: www.bit.ly/WestArdenArcade

Related County Initiatives

Initiative	Lead Department
County Housing Element (6 th cycle, FY2021-2029)	Sac County Planning & Environmental Review (PER)
Communitywide Climate Action Plan	Sac County Planning & Environmental Review (PER)
Environmental Justice Element (adopted 2019, currently in implementation)	Sac County Planning & Environmental Review (PER)
Re-Envision West Arden Arcade Complete Streets Project	Sac County Planning & Environmental Review (PER)
Arden Way Phase 1 Capital Improvements	Sac County Department of Transportation (DOT)
Arden Way Master Plan	Sac County Department of Transportation (DOT)
County Active Transportation Plan	Sac County Department of Transportation (DOT)
Empowerment Park	Sacramento Municipal Utility District/Park District
Local Hazard Mitigation Plan Update	Sac County Department of Water Resources
Property-based Improvement District formation	Sac County Economic Development

REWAA Community Participation

Broad Range of Community Groups:

- Arden Community Council
- Arden Manor Park District
- Breathe California Sacramento Region*
- California Council of the Blind
- Country Club Alliance of Neighborhoods*
- Encina Preparatory High School
- Fulton Avenue Association
- Fulton El Camino Park District
- Gateway Community Charter School
- Greater Arden Chamber of Commerce*
- La Familia Counseling Center*
- Mission Oaks Park District
- Mutual Assistance Network
- Sacramento Area Congregations Together*
- Sacramento Area Bicycle Advocates
- Sacramento County Bicycle Advisory Committee
- Sacramento County Department of Transportation*
- Sacramento County Disability Advisory Commission*
- Sacramento County Office of Economic Development
- Sacramento Metropolitan Air Quality Management District
- San Juan Unified School District
- WALKS Sacramento*
- United Cerebral Palsy Sacramento

* Denotes Community Advisory Committee member

80+ participants during Discovery Workshop Public Meetings (August 3-6)

Online Survey (July 30-September 11)

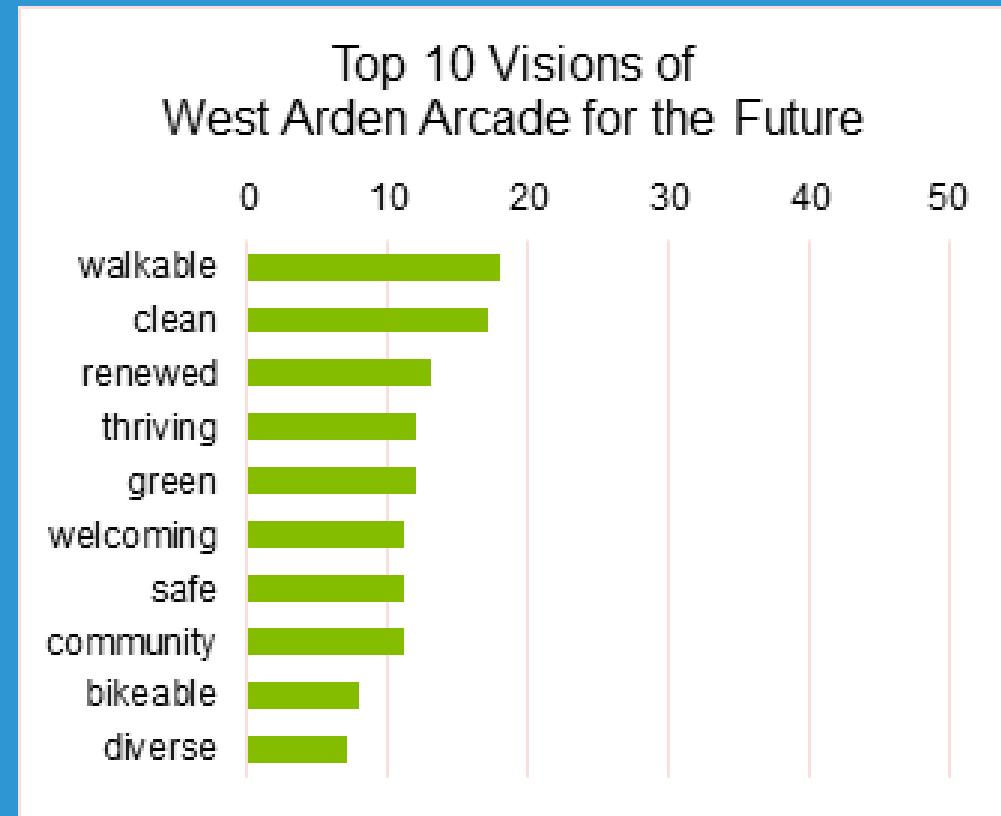
Creative Student Engagement Activity in October! Working with school representatives to encourage youth participation.

What we heard at the discovery workshop...

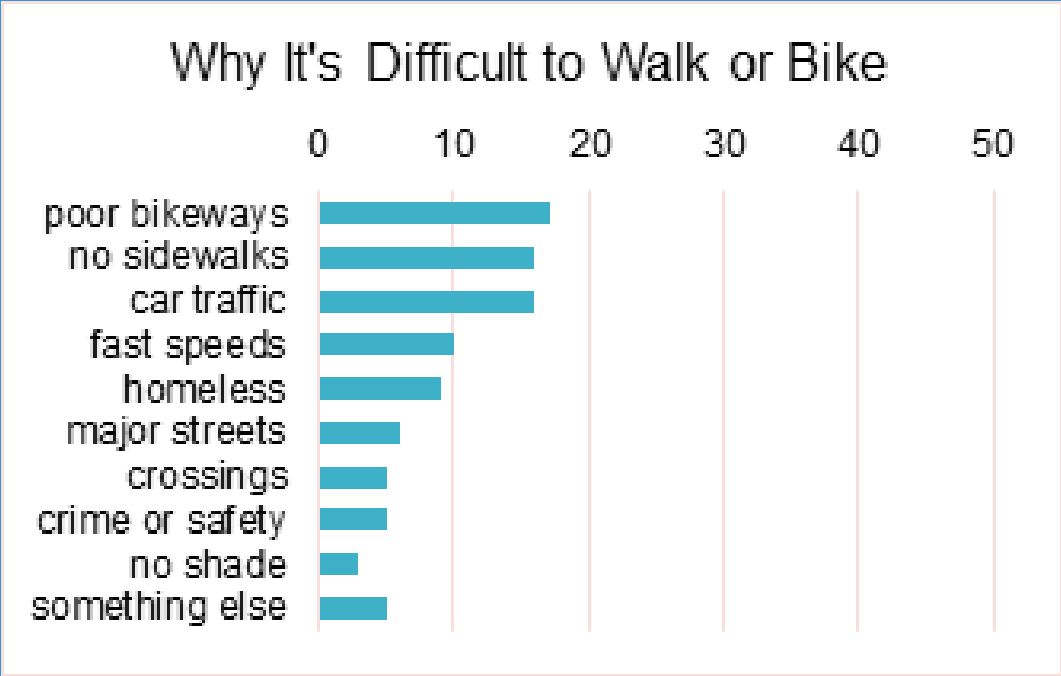
- We value a **diverse, family-friendly, healthy community**
- We want to create a **vibrant neighborhood** with a **strong identity**
- We want to **improve accessibility** for people walking, biking and taking transit
- We want to see **local businesses thrive, attractive destinations, and people-scaled amenities**

Online Survey

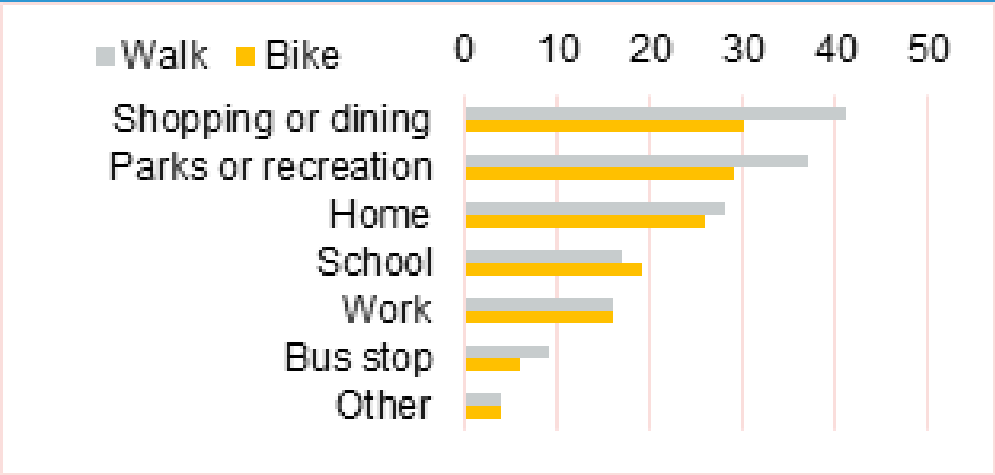
Open July 30 - Sept 11, 77 completed responses (~200 initiated surveys)



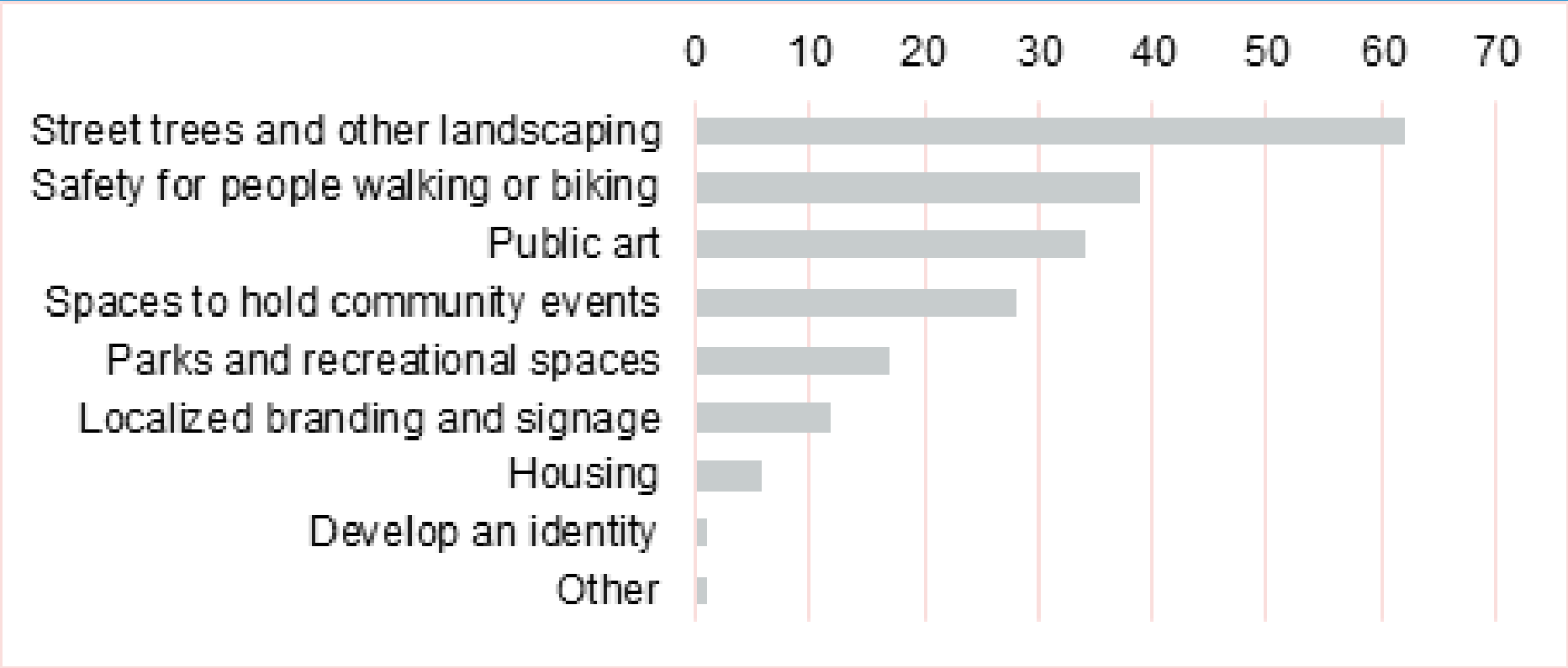
Walking and biking in West Arden Arcade



Desired walking and biking destinations

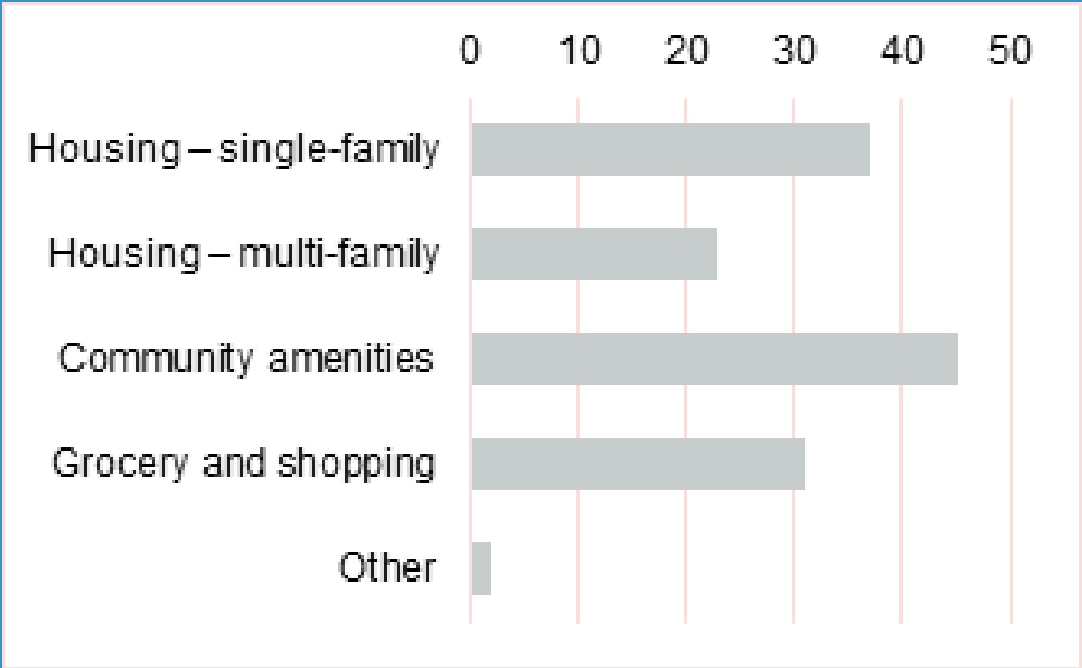


What streetscape elements do people want?

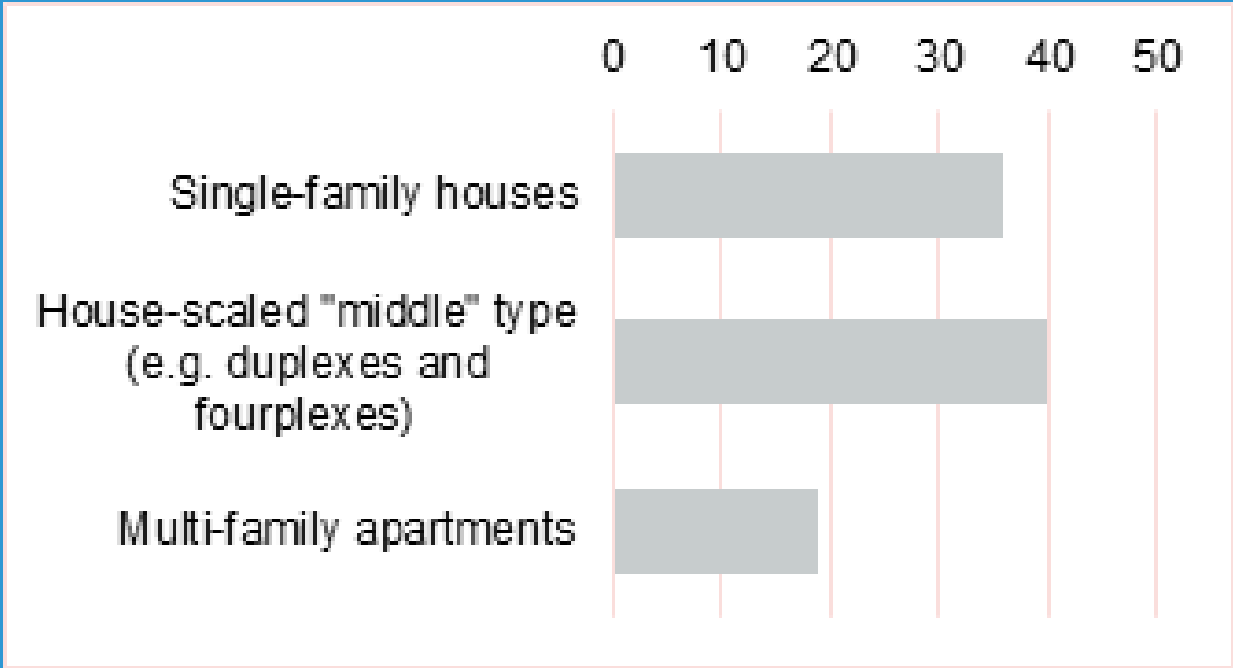


What kind of land use and housing types do people want?

Desired new land uses



Preferred housing types



Design Directives based on Community Input

Create comfortable, safe places to walk and bike

Create spaces for trees, shade, and landscaping



Design Directives based on Community Input

Create a sense of community identity

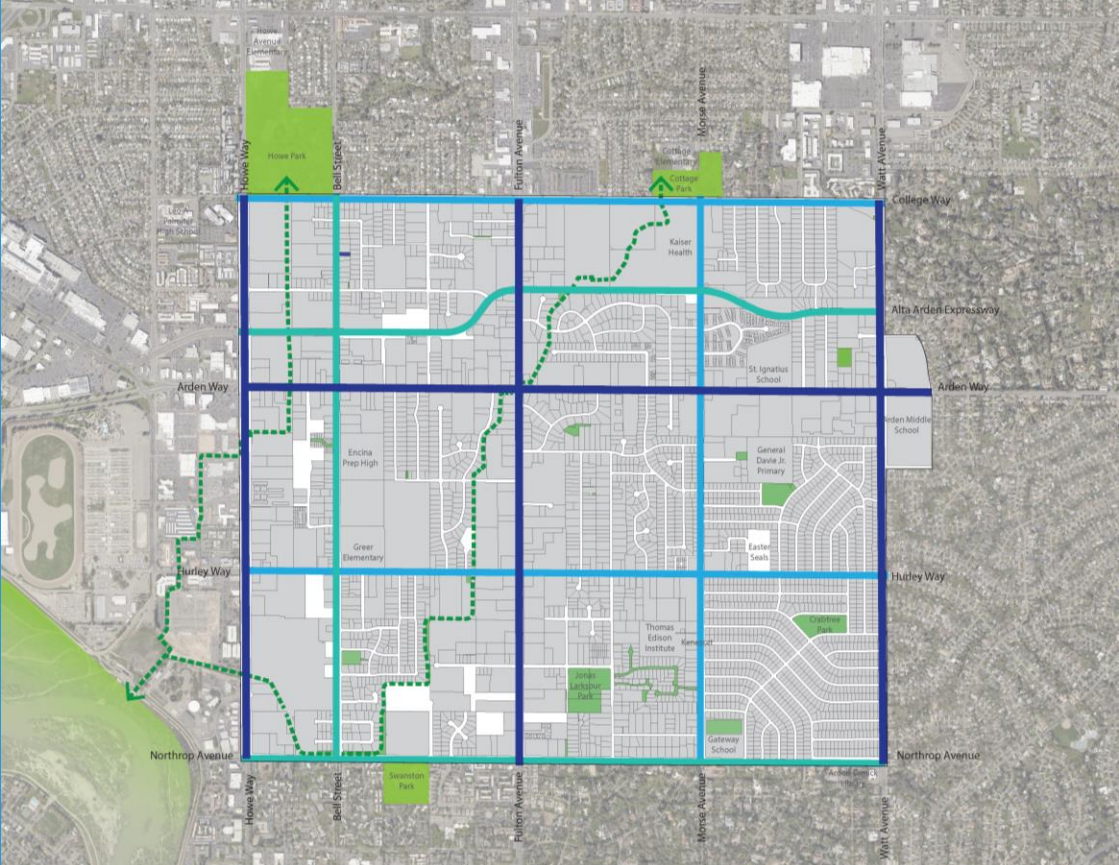


Create nodes of activity with cohesive connections



Our work so far...

Create a place-based network of streets to improve access



- Prosperity Corridors
- Parkway
- Neighborhood Greenways

Prosperity Corridors



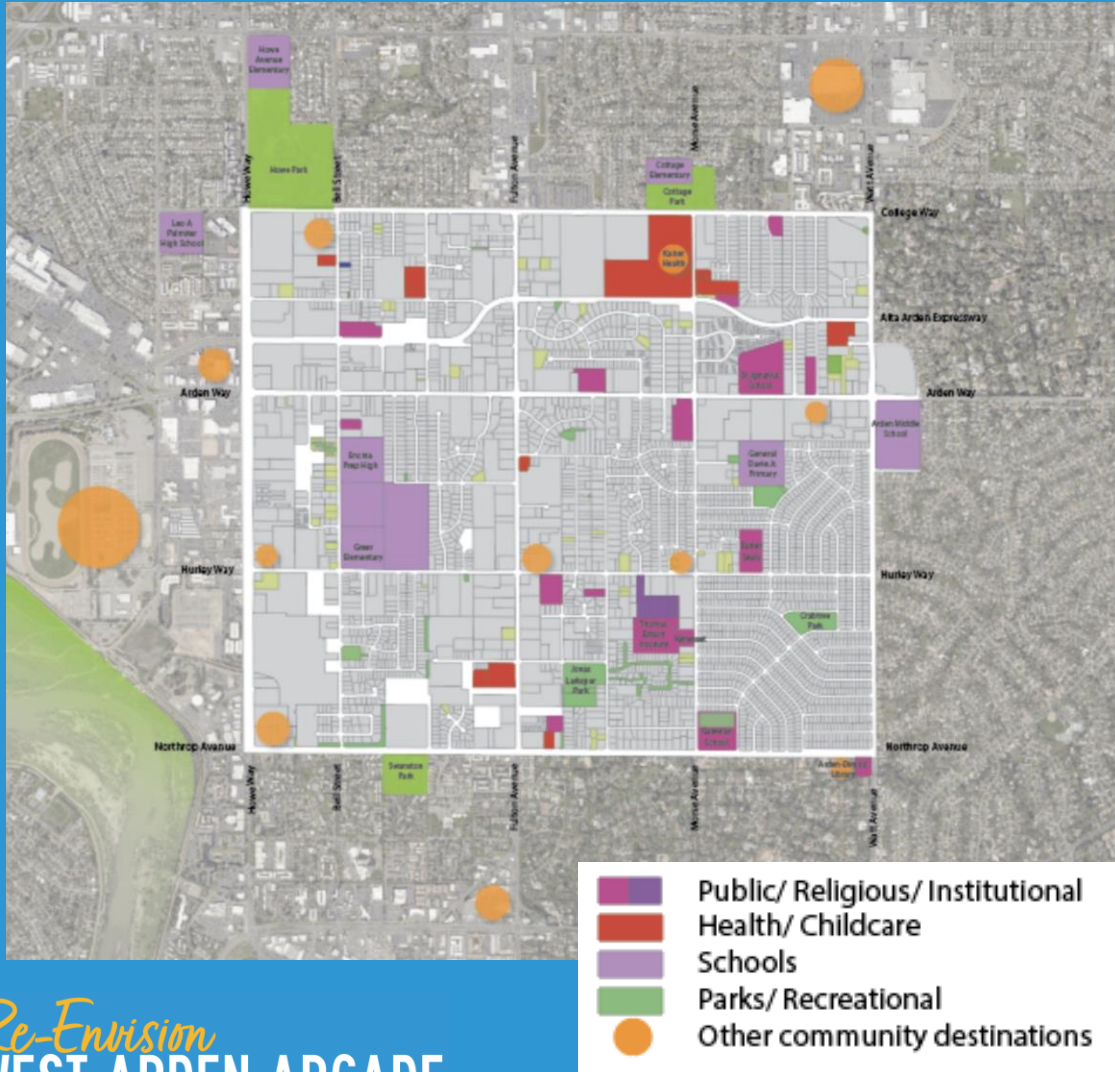
Neighborhood Greenways



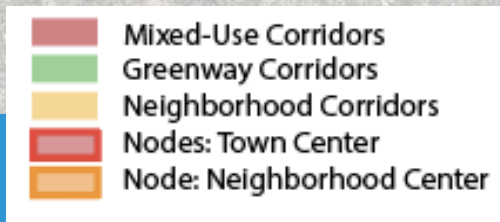
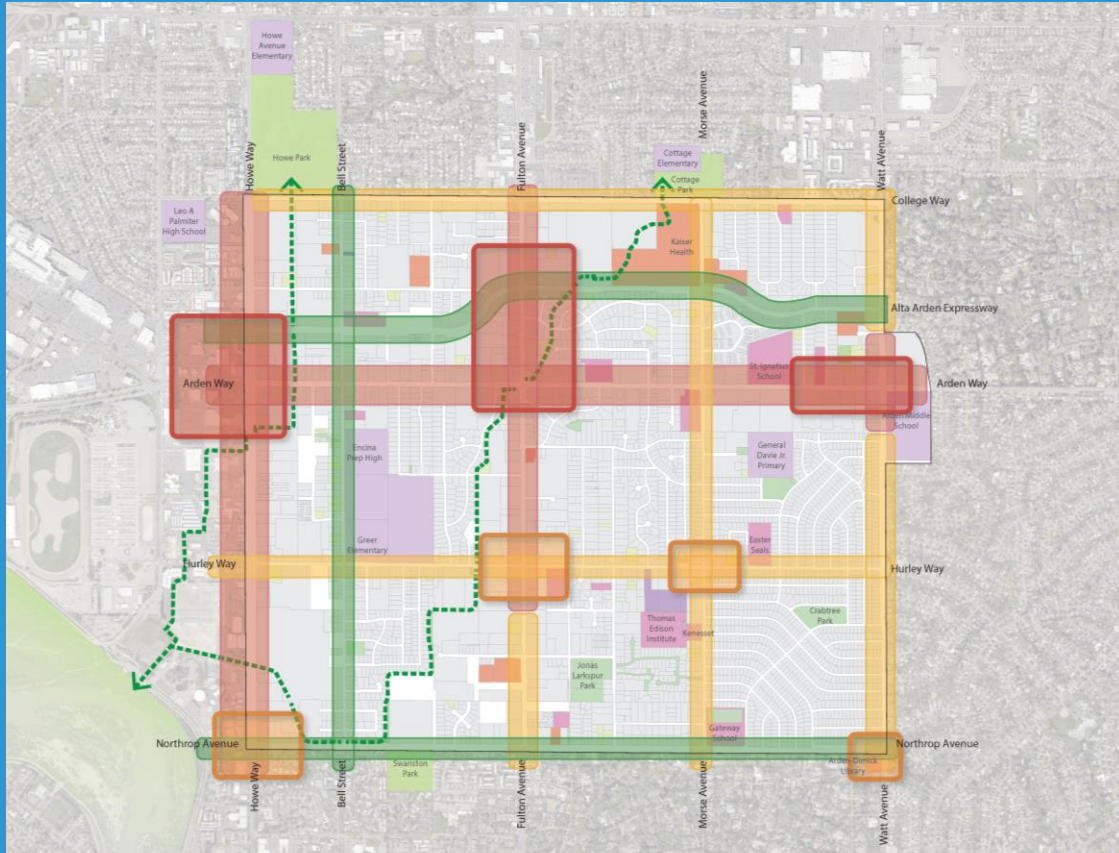
Parkway



Identify community destinations



Overlay opportunity sites to create nodes and corridors



Community nodes along corridors create centers of activity.

Nodes at two scales, varying in function, intensity of use and built form:

- Town Centers
- Neighborhood Centers

Small Group Discussions

**Session 1:
Transportation**

30 minutes

**Session 2:
Built Form**

30 minutes

Small Group Discussions

Session 1:
Transportation

Intro

Community Values

Preservation

Correction

Creation

Culture & History

People's
Experiences

Design Principles



Priorities

Process

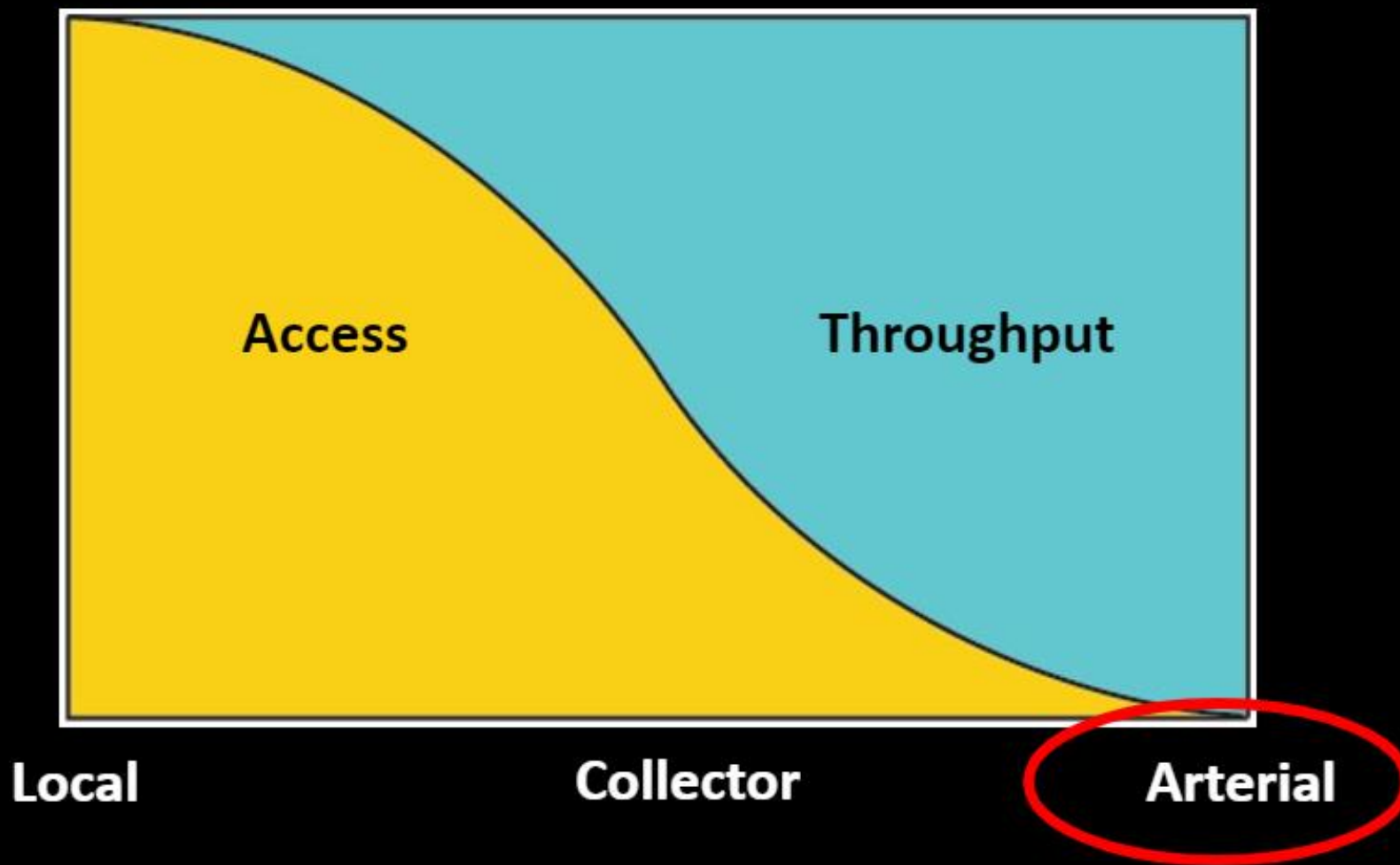
Mobility (now and in the future)

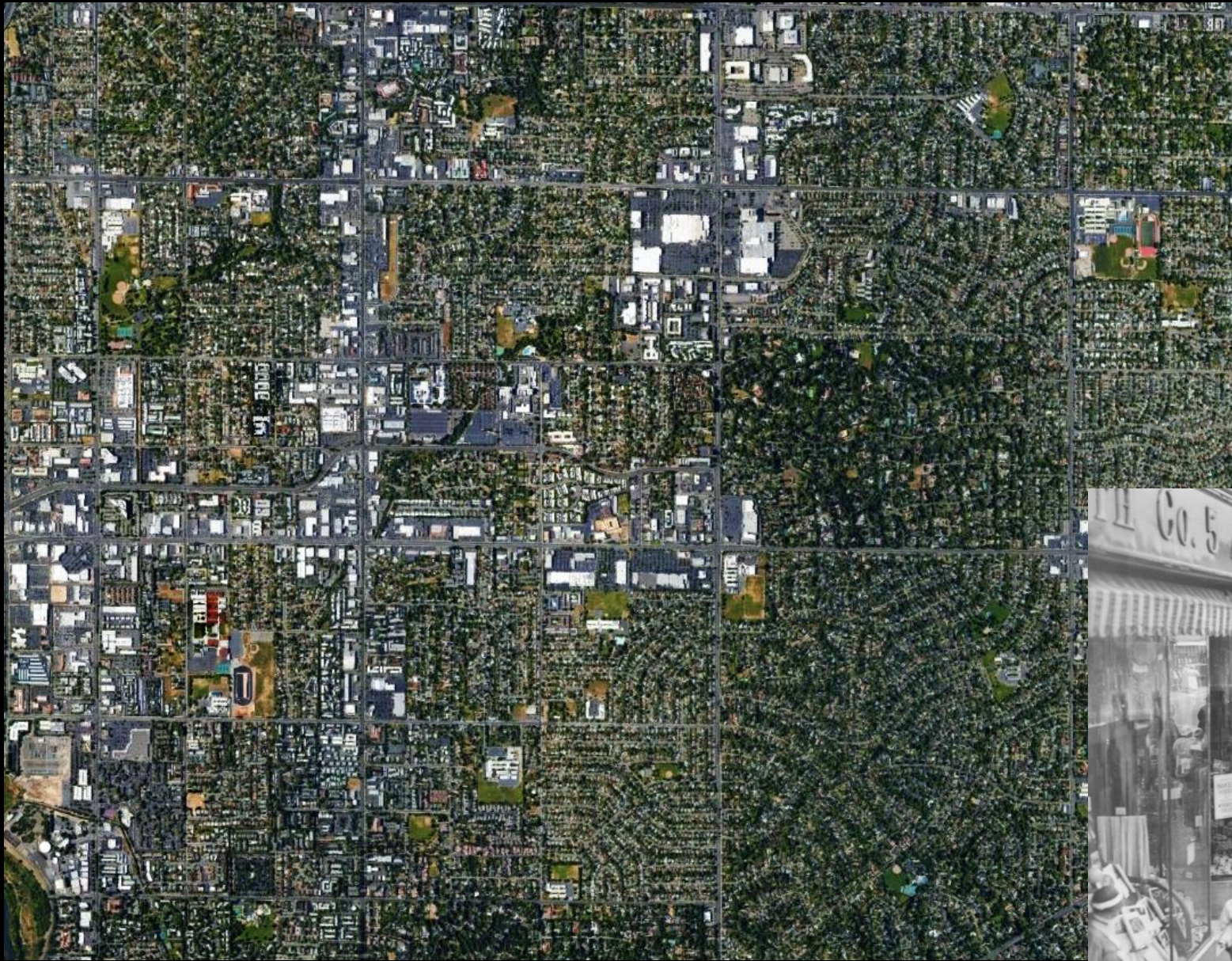
The **populations'** capabilities and strategies to move in order to access what they need to live within the city.

Many Populations: people who have disabilities, have different income levels, and/or are young, elderly, millennials, pedestrians, cyclists, transit users, students...



Modern Conception of the Purpose of Streets



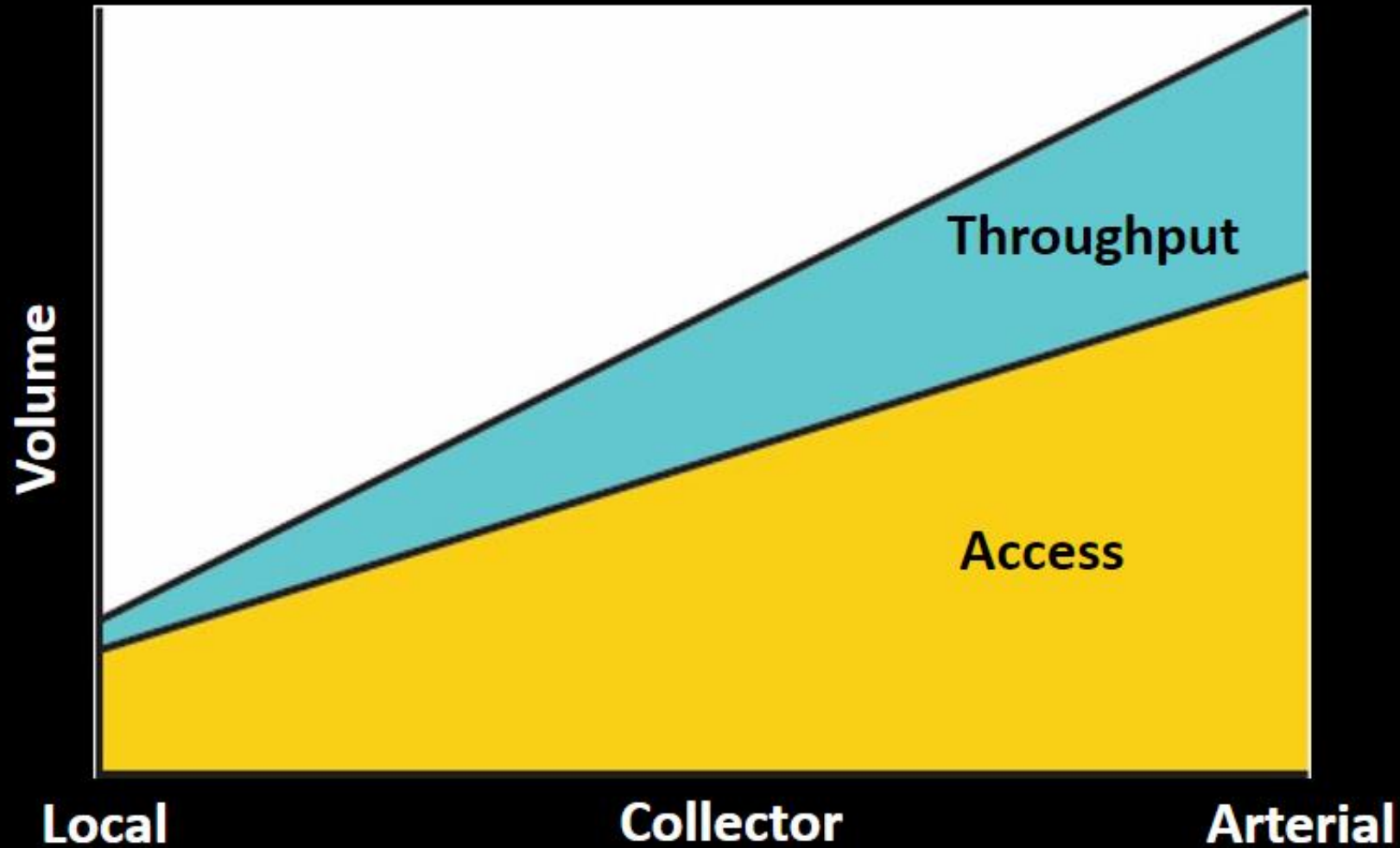


Can you see
where the arterial
streets are?

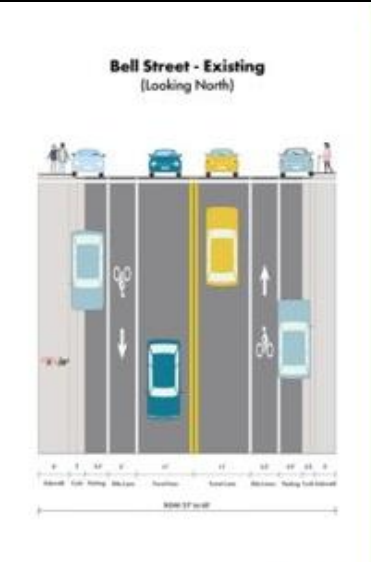


West Arden Arcade

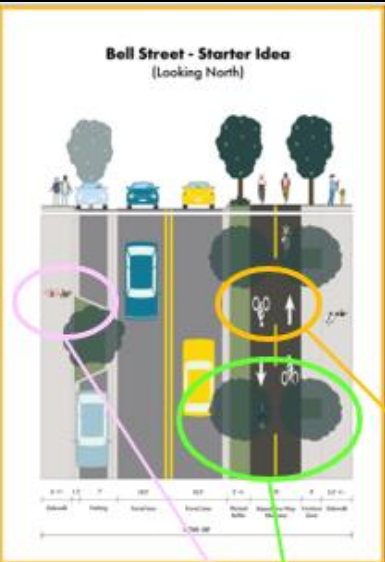
Traditional Conception of Access & Throughput



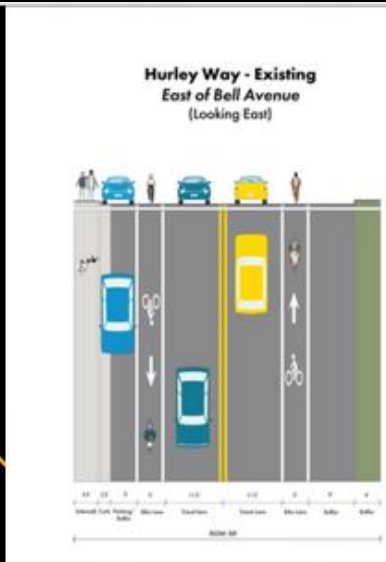




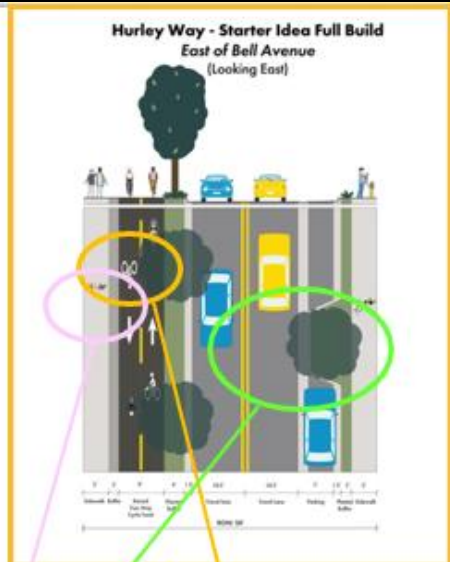
Before



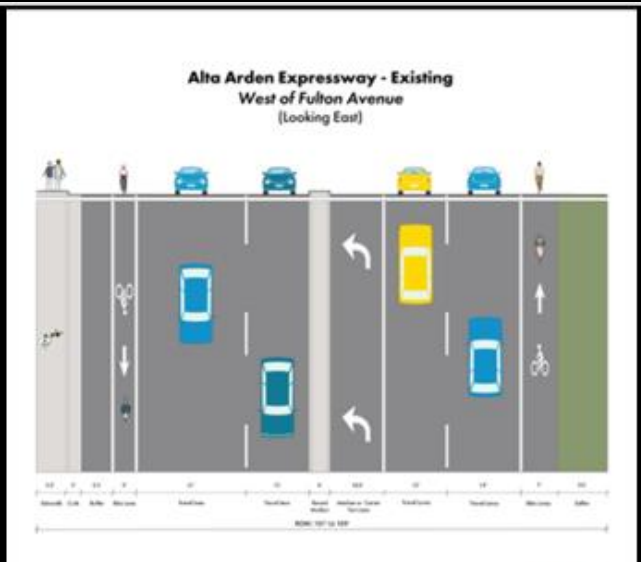
After



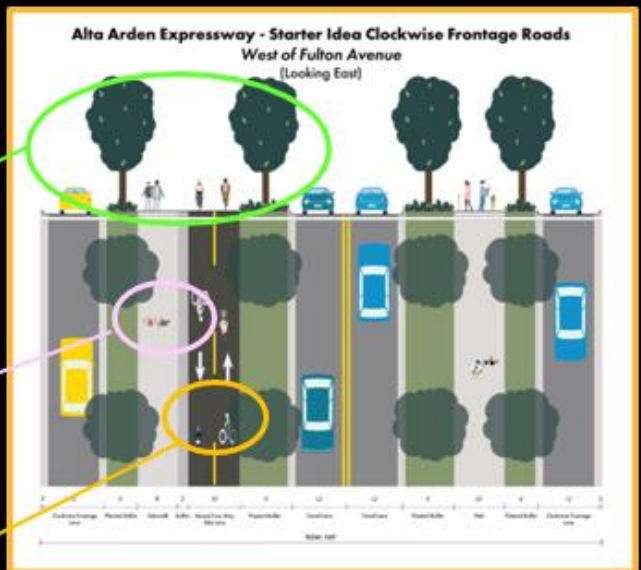
Before



After

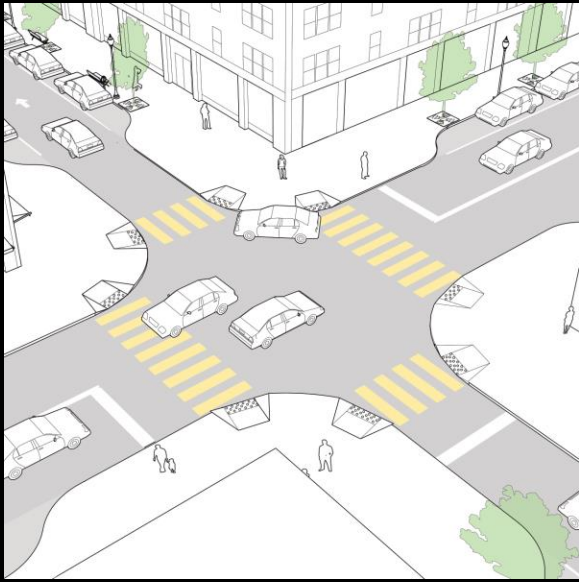


Before



After

Notice the Common Themes: **Trees**, **Comfortable Sidewalks**, **Separated Bike Lanes**,



High-visibility crosswalks



Pedestrian refuge island



Raised crosswalk



Curb extensions



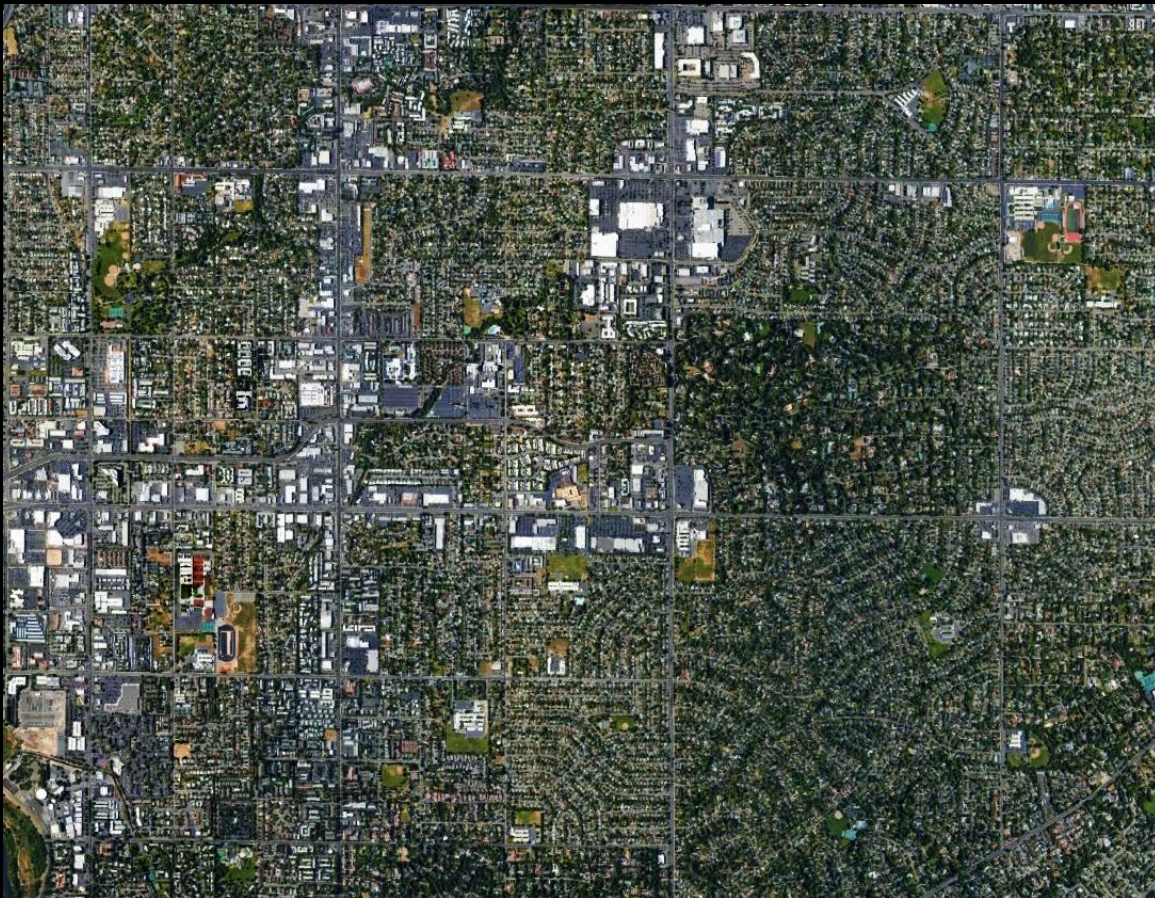
Traffic circle



Speed humps



Flashing beacons



Sustainability Litmus Test:

Does the change reward short trips or transit trips?

Design Questions:

Travel speed?

Access to businesses?

Crossing locations?

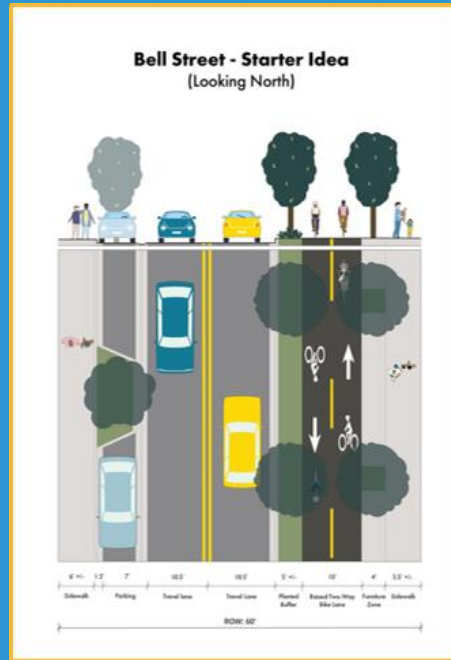
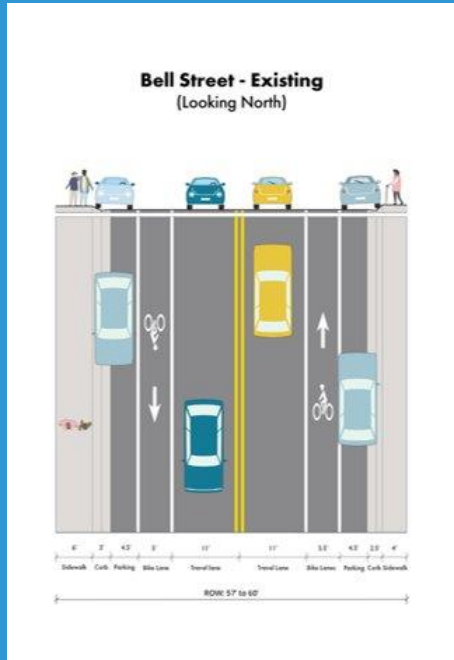
Shade?

Sidewalks?

Separated bike lanes?



Transportation-focused Small Group Discussion



Give feedback on ideas for improved street cross-sections.

What do you like?

What do you want to see more of?

What are your concerns?

Neighborhood streets and connections – what spot treatments would be helpful?

Transportation Discussion: Report Out

What are 1-2 key takeaways
from your conversation?

Small Group Discussions

Session 2:
Built Form

Intro

What is walkability?

A measure of how friendly a place is to walking and biking

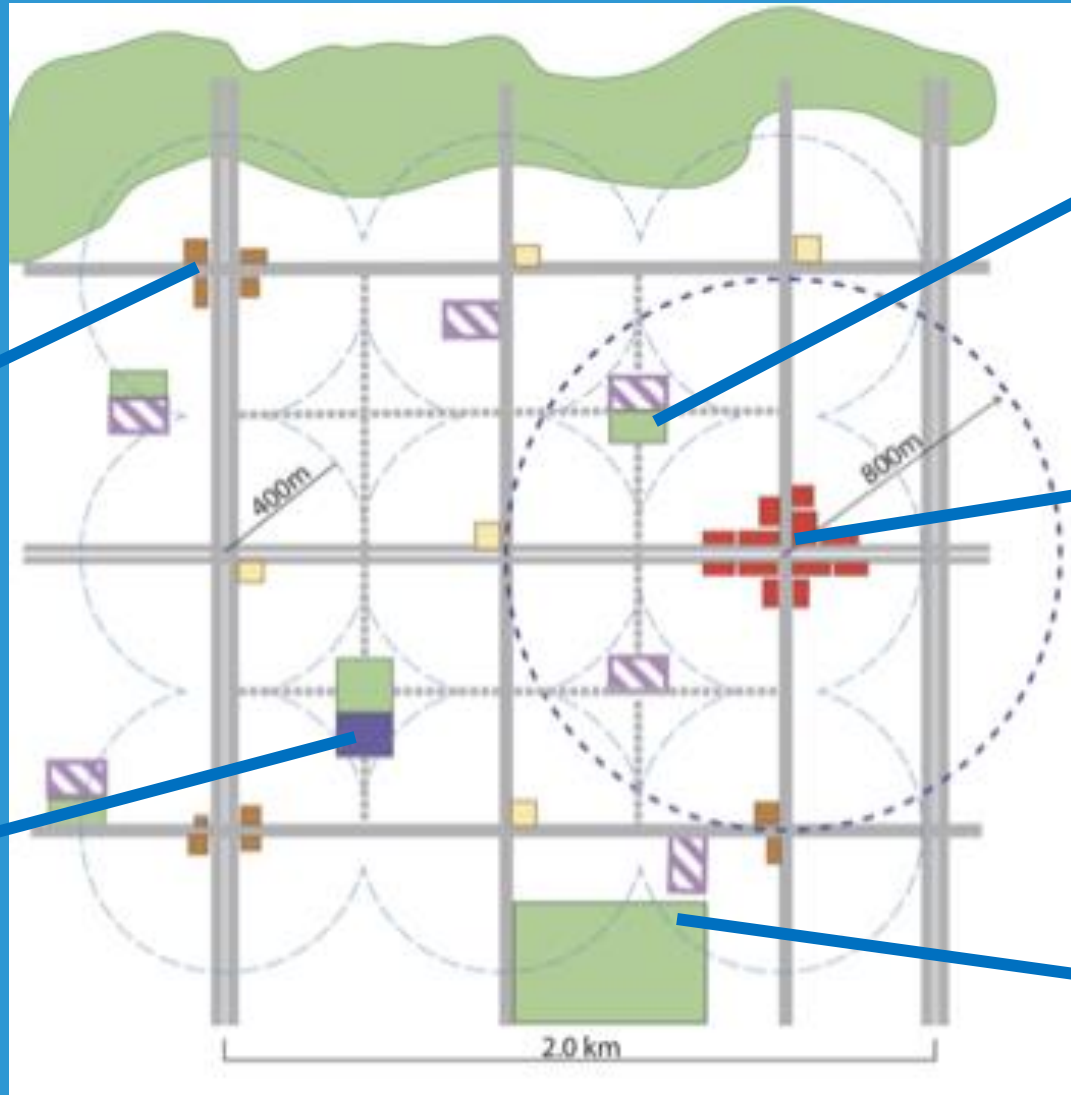
A walkable place makes it **optional** to use a car and makes it **safe and enjoyable** for people of all ages to walk and bike



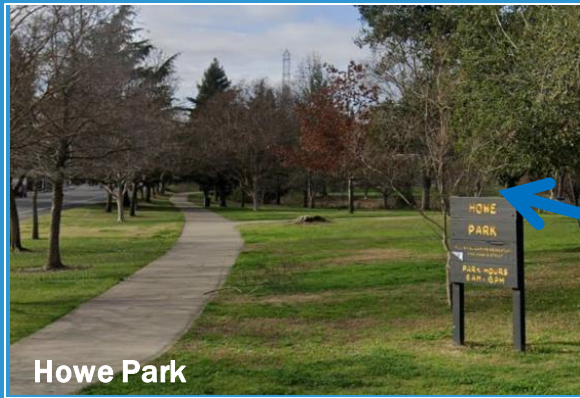
A walkable place is safe for everyone



A "15 - minute neighborhood"



West Arden Arcade has many of these attributes



Howe Park



Kaiser Permanente



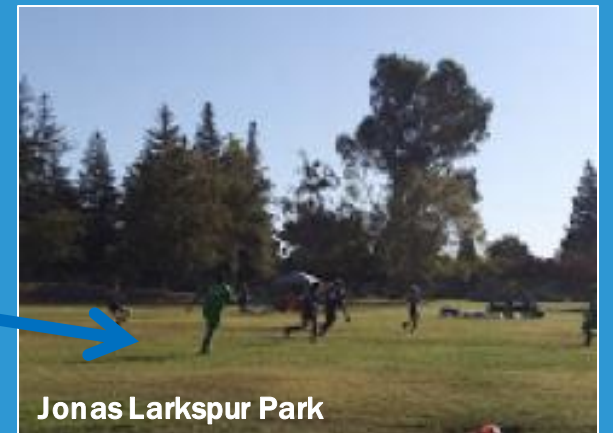
Greer Elementary



Arden Middle School



Swanston Park



Jonas Larkspur Park



Why is built form important?



Design of sidewalks, public spaces needs to be supported by design of building frontages

- Building frontage
- Space for entrances, window shopping
- Space for pedestrians
- Space for street furniture, lighting, trees
- Trees and urban greenery
- Public art
- Street lighting

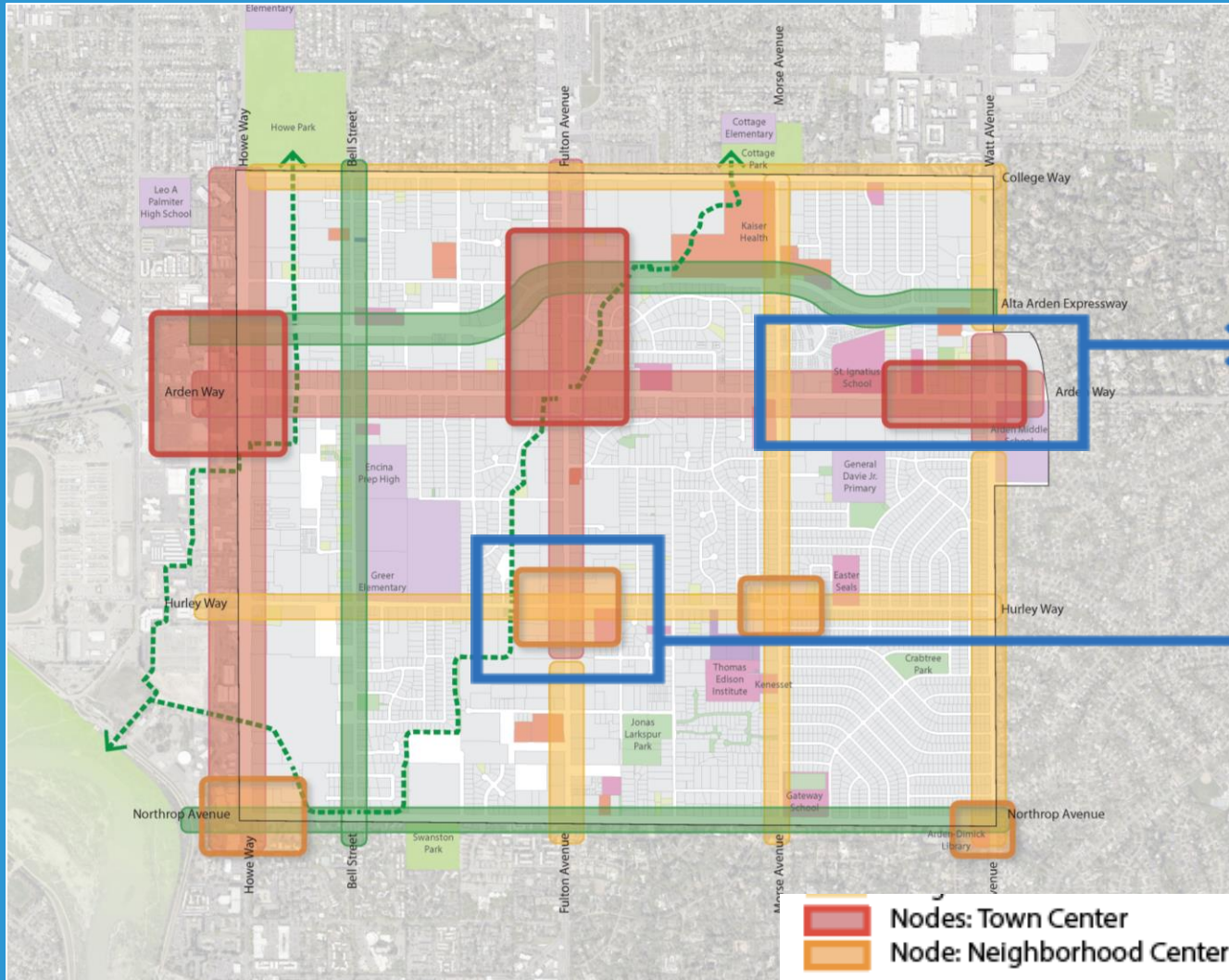
Key components need to work together



Building form and massing (facades, entrances, etc.) determine how active and well-used streets and sidewalks will be

- Active ground floor uses
- Building transition (no blank side wall)
- Activities engaging the street
- Varied roofline

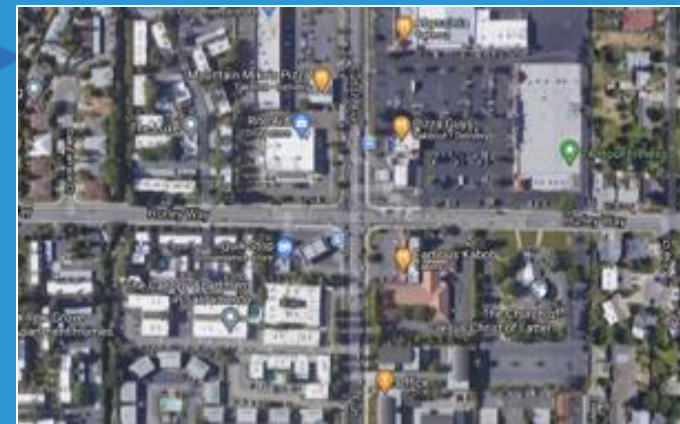
Different types of nodes in West Arden Arcade



"Town Center" node



"Neighborhood Center" node



What can we do in the near term?



Underutilized parking lot

Low-cost, quick-build improvements



Food trucks, benches, string lights

© DEPICTION, LLC 2018

Rethinking on-street parking spaces



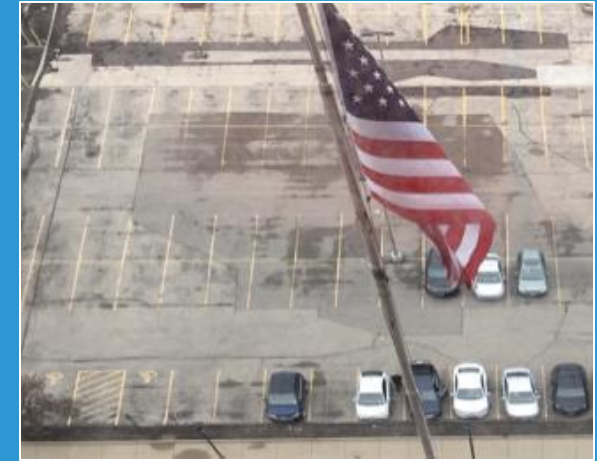
Parklets (can be temporary or permanent)



Rethinking parking lots



Example from Milwaukee, WI



Underutilized parking lots can be multi-use spaces

Rethinking parking lots



Weekly market at Napa, CA



Pop-up food fair at Philadelphia, PA



Temporary activities

What can we do in the long term?



Example of larger-scale transformation at a "Community node"



What can we do in the long term?



Example of smaller-scale, local-serving transformation at a "Neighborhood node"



Built form-focused Small Group Discussion

What aspects of built form do you think are most important in making places walkable?

- Building heights
- Building facades (massing, step-backs and transitions)
- Building frontages (relating to uses)

What do you think will work best in West Arden Arcade in the short term?

- Temporary streetscapes (parklets, public spaces, etc.)
- Activities (food trucks, weekly markets, etc.)

What do you think will work best in West Arden Arcade in the long term?

- More housing at different scales?
- Better connectivity within large blocks?
- New public spaces?

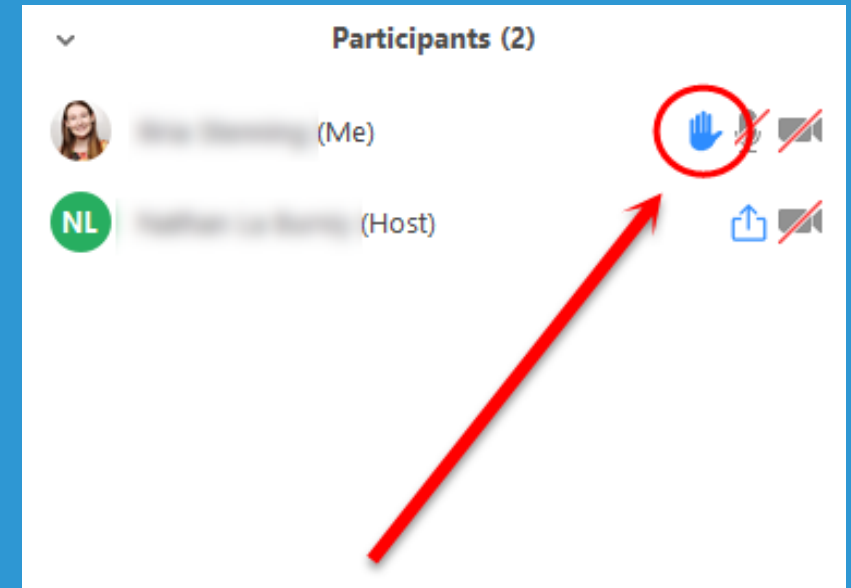
Built Form Discussion: Report Out

What are 1-2 key takeaways
from your conversation?

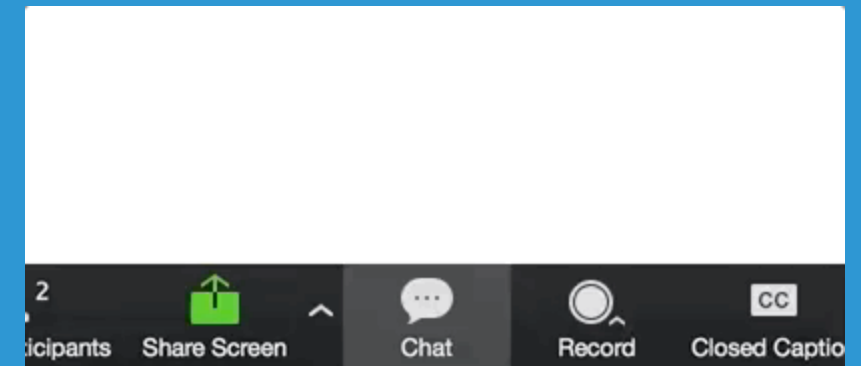
Muted Upon Entry

Everyone is muted upon entry.

- ✓ Please use the Chat feature or Raise Your Hand if you have a question. When called on, lower your hand and unmute yourself!
- ✓ (On a phone, press 9 to raise your hand and 6 to unmute when prompted)



What you'll see when your hand is raised



Click the speech bubble to open the chat

Final Q&A

Thank you!

Re-Envision
WEST ARDEN ARCADE

project website: www.bit.ly/WestArdenArcade