

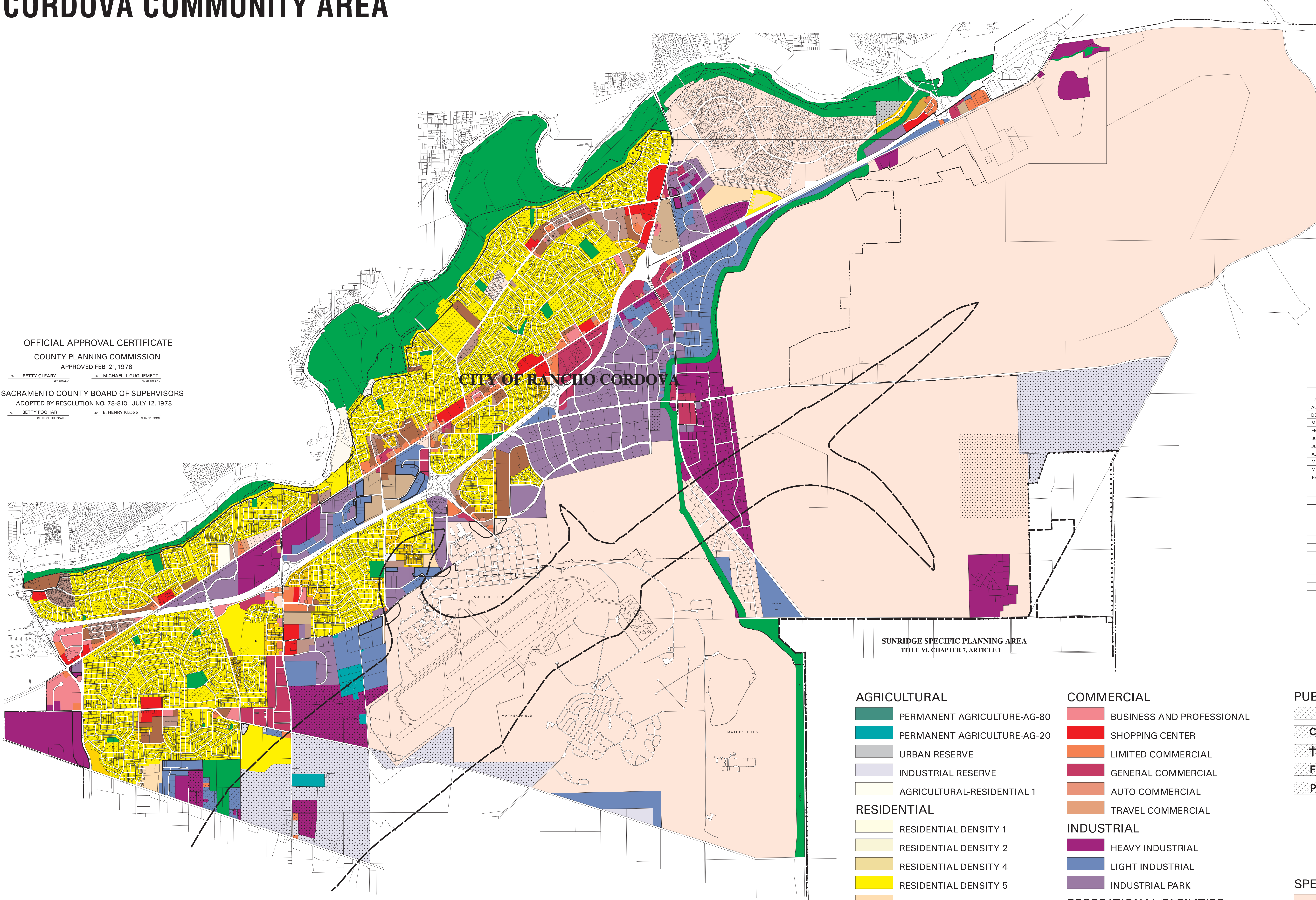
CORDOVA COMMUNITY AREA

OFFICIAL APPROVAL CERTIFICATE
 COUNTY PLANNING COMMISSION
 APPROVED FEB. 21, 1978

BETTY O'LEARY SECRETARY MICHAEL J. GUGLIEMETTI CHAIRPERSON
 SACRAMENTO COUNTY BOARD OF SUPERVISORS
 ADOPTED BY RESOLUTION NO. 78-810 JULY 12, 1978

BETTY POOHAR CLERK OF THE BOARD E. HENRY KLOSS COMMISSIONER

REVISION TO THE COMMUNITY PLAN			
ADOPTED DATE	RESOLUTION NO.	ADOPTED DATE	RESOLUTION NO.
AUG. 11, 1999	99-1047		
DEC. 12, 1999	99-1576		
MAY 24, 2000	00-0586		
FEB. 7, 2001	01-0165		
JULY 18, 2001	01-0831		
JULY 17, 2002	02-0901		
AUG. 28, 2002	02-1041		
MAY 25, 2003	03-0589		
MAR. 10, 2004	04-0256		
FEB. 25, 2004	04-0213		



- AGRICULTURAL**
- PERMANENT AGRICULTURE-AG-80
 - PERMANENT AGRICULTURE-AG-20
 - URBAN RESERVE
 - INDUSTRIAL RESERVE
 - AGRICULTURAL-RESIDENTIAL 1
- RESIDENTIAL**
- RESIDENTIAL DENSITY 1
 - RESIDENTIAL DENSITY 2
 - RESIDENTIAL DENSITY 4
 - RESIDENTIAL DENSITY 5
 - RESIDENTIAL DENSITY 7
 - RESIDENTIAL DENSITY 10
 - RESIDENTIAL DENSITY 20
 - RESIDENTIAL DENSITY 25
 - RESIDENTIAL DENSITY 30
 - MOBILEHOME PARK
- COMMERCIAL**
- BUSINESS AND PROFESSIONAL
 - SHOPPING CENTER
 - LIMITED COMMERCIAL
 - GENERAL COMMERCIAL
 - AUTO COMMERCIAL
 - TRAVEL COMMERCIAL
- INDUSTRIAL**
- HEAVY INDUSTRIAL
 - LIGHT INDUSTRIAL
 - INDUSTRIAL PARK
- RECREATIONAL FACILITIES**
- RECREATION (includes Existing Parks)
 - PROPOSED PARKS

- PUBLIC/QUASI-PUBLIC**
- PUBLIC/QUASI-PUBLIC
 - CHURCH
 - CEMETERY
 - FIRE STATION
 - POST OFFICE
 - PROPOSED SCHOOLS
 - ELEMENTARY
 - JUNIOR HIGH
 - SENIOR HIGH
- SPECIAL & COMBINING AREAS**
- SPECIAL PLANNING AREA
 - NEIGHBORHOOD PRESERVATION AREA
 - SURFACE MINING
 - PARKWAY CORRIDOR
 - FLOOD COMBINING AREA
 - SUNRISE DOUGLAS COMMUNITY PLAN AREA

SUNRIDGE SPECIFIC PLANNING AREA
 TITLE VI, CHAPTER 7, ARTICLE 1

